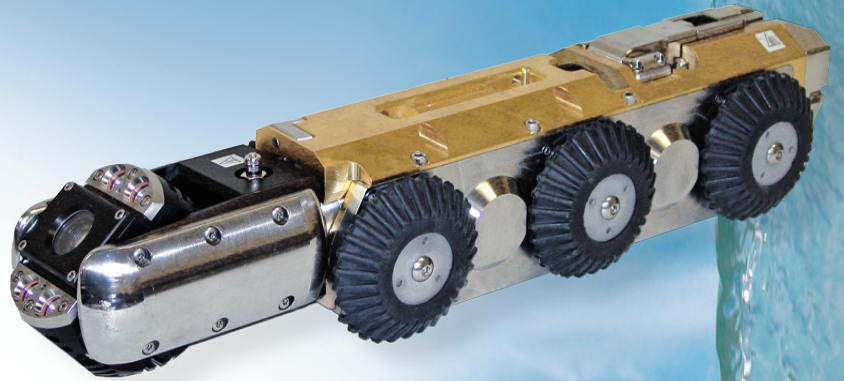


“The Standard of the Industry”



## Compact Pipe Ranger

### Multi-Conductor Wheeled Transporter

The Compact Pipe Ranger (CPR) is a lightweight, compact, and rugged steerable CCTV camera transporter that is used to inspect sanitary and storm sewers. It is made to traverse long distances and tough pipe conditions, and to facilitate ease of handling during insertion and retrieval.

The Compact Pipe Ranger (CPR) is designed to operate on a minimum of 1000' ft of multi-conductor TV cable to inspect 6" relined pipe through 30" diameter pipe. The Compact Pipe Ranger (CPR) includes full-proportional steering to traverse meandering pipe and 45 and 90 degree turns.

When assembled with the CUES OZIII zoom pan and tilt camera, the compact length enables the unit to negotiate most difficult entry conditions and standard sweeps. The superior pulling power of the CPR, combined with the optics and directional lighting of the compact OZ III zoom pan and tilt camera (with the ability to rotate in a 4" circle), creates video inspection quality that's unsurpassed in the industry.

Multiple wheel sets are available to maximize bottom-clearance, traction, and optimize camera position. Ease of operation is accomplished with one joystick control for all transporter and camera movements. A variable "cruise control" setting is available for transporter speed for hands-off operation!

### Features/Benefits:

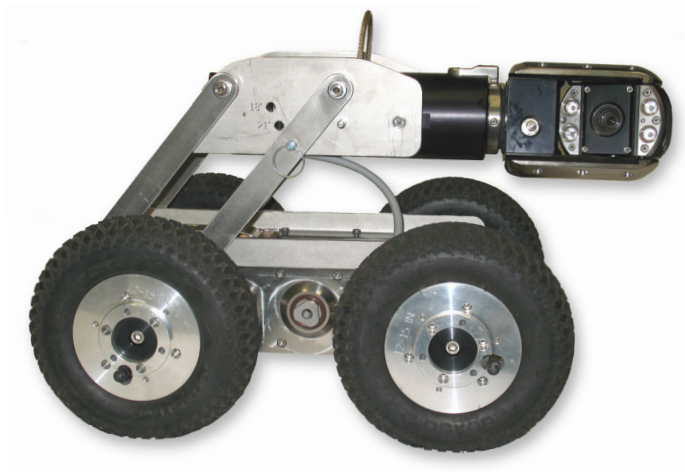
- Optional mechanical camera lift is available to prevent the need for an operator to enter the manhole to position and reposition the camera height and to optically center the camera in varying pipe diameters
- Optional rear-viewing camera, which is mounted to the CPR transporter, is available to help avoid obstacles and potential tip-overs in the pipeline by providing visibility when retrieving the transporter or driving in reverse
- Superior pulling power
- Wheels can be installed or removed from a single point of contact
- 2-speed transmission doubles the torque of the transporter for large pipe inspections
- Locking bayonet-style rear bulkhead connector - durable/stable
- Operates in 6" relined pipe through 30" diameter pipe and larger
- Full proportional steering and can complete a 360 degree turn within its own radius
- Multiple wheel sets to accommodate your needs
- High-traction wheels are available for slippery PVC pipe
- Operates with CUES OZIII & Nite Lite III cameras, multi-conductor cable



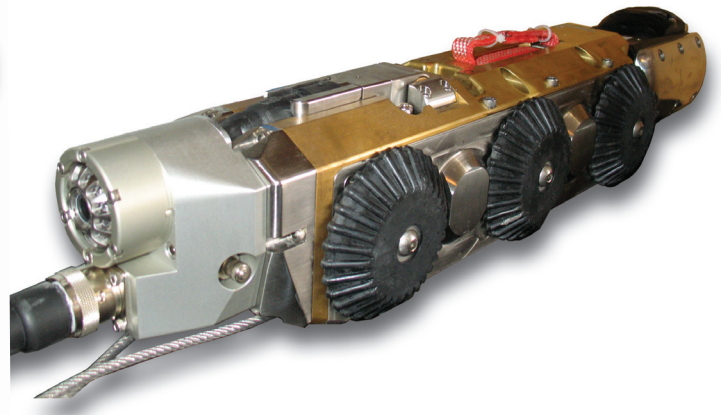
*Go the distance with the  
Compact Pipe Ranger (CPR)!*

# COMPACT PIPE RANGER (CPR)

## Multi-conductor Wheeled Transporter



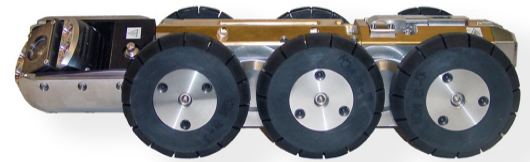
**Optional Mechanical Camera Lift**



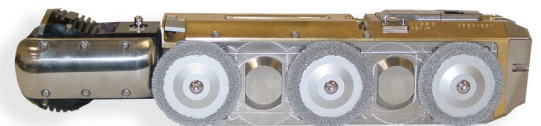
**Optional Rear-Viewing Camera**

### Specifications

- Operates with CUES multi conductor systems
- Operates with the CUES OZ III zoom pan and tilt camera
- Designed to traverse sanitary sewers, storm drains and pipe with debris and silt
- Freewheel, powered reverse, forward variable speed control, all wheel drive
- Rugged, durable and sealed to eliminate water intrusion
- Provides clearance in a 6" diameter relined pipe; can inspect up to 30" diameter pipe and larger
- Two-speed transmission doubles the torque and maximizes traction in varying pipe conditions
- Can turn 360° within its own radius; pinpoint control maximizes the ability to traverse challenging pipe conditions
- Flight stick controller to operate the transporter, optional camera lift, and camera movements with one hand; provides operational simplicity
- Multiple wheel sets for small, intermediate, and large diameter pipes; optional high-traction steel wheels are available
- Rear swivel bulkhead connector minimizes strain on the cable connection during insertion and retrieval of the unit
- Compact camera/transporter length with optical zoom pan & tilt camera (OZ III) facilitates entry into small inverts, small manholes, dead end lines, and traversal of sweeps
- Full proportional steering control to traverse meandering pipe with 45° and 90° turns; minimizes transporter turnover in small diameter pipe



Compact Pipe Ranger in the 8" Configuration



Compact Pipe Ranger in the 6" Steel Configuration



Operates with CUES OZIII & Nite Lite III Cameras