



# PRODUCT INDEX

PRODUCT	PAGE
<b>SINGLE AND MULTI-SIZE TEST PLUGS AND FLOW-THRU PLUGS</b>	
Rupture Protected Domehead Plugs	1
Multi-Size Domehead™	2-3
Multi-Size Flow-Thru™	4-5
Single-Size MW™ Plug	6
Single-Size Test Plug (SST)	7
Super Flow™ Plug	8
Multi-Size Interchange™ Plugs	9
Single-Size High Pressure Plug	10-11
Single-Size AR™ & Single-Size Blocking Plug (SSB)	12
Long AR Plugs™	13
Single-Size Disc Plug	13
Wing Nut Mechanical Plug	17
Spot Repair Carrier	25
<b>WELL PACKERS</b>	24
<b>MANHOLE VACUUM TESTING EQUIPMENT</b>	
Super Vac & Smart Box Vacuum Kits	18
Test Heads	19
<b>AIR TESTING EQUIPMENT</b>	
Air Testing Kits	20
Line Acceptance / Leak Locating	20-21
Air Test Trailer	22
Air Testing Accessories	23
<b>JOINT TESTERS</b>	
High & Low Pressure	14-15
Double Bladder Low Pressure Joint Tester	16
<b>HURCO PRODUCTS</b>	
Deflection Gauge, Ripcord Ventilator, Smoke Testing Equipment	26-27
Hydrostatic Test Pump	
<b>WASHING BALLS</b>	
Single-Size and Multi-Size	30
<b>ACCESSORY ITEMS</b>	
“E-Z Plug” Adapters and Accessories	28
Protective Sleeves	31
Hoses, Gauges, Fittings, Hand Pumps, etc.	32-33
Miscellaneous Parts	34
Terms and Conditions	35
Safety and Warranty	36
Conversion Charts and Formulas	37
Custom Designs	27

# RUPTURE PROTECTED DOMEHEAD FRONT AND BACK PLUGS



The new Lansas® **RP** Rupture Protected plugs have a built in relief valve that will help prevent the plug from being over inflated due to faulty gauges or operator error. Once the valve cracking pressure is reached, the Lansas® **RP** relief valve will open relieving excess air pressure and reset / reseal just below the required plug inflation pressure.



## FEATURES:

- No more catastrophic plug failures due to faulty gauges. If the gauge is reading incorrectly and you start to over inflate the plug, the relief valve will crack relieving any excess pressure from the plug and preventing it from failing.
- Operator error will no longer cause your plug to fail due to over inflation.
- When the relief valve cracks, it will relieve the excess pressure in the plug but does not completely deflate it allowing the plug to stay inflated and in place. Unlike other manufacturer's rupture protection devices that cause the plug to completely deflate causing your test to fail or your back pressure to be relieved, the Lansas® Rupture Protection safeguards your plug without the mess!
- The Lansas® RP relief valve is recessed mounted to prevent physical damage when the plug is being transported or installed.
- The Lansas® RP Rubber Dirt Cover helps protect the relief valve against the harsh work environment. Dirt and debris is kept away from the valve.
- The Lansas® RP relief valve is not a single use device and will relieve over and over. Unlike other manufacturers who offer a one time use solution and then require you to purchase another unit. Our less costly RP relief valve will protect your plug during many uses.
- The Lansas® RP Rupture Protected plugs relieve once the plug is over inflated by a maximum of 33% above the recommended inflation pressure.

### ALSO AVAILABLE:

Replacement Rubber Dirt Covers  
P/N 50-004

Relief Valve Installation Wrench  
P/N 08-100RVS

### REPLACEMENT VALVES:

For 15"-30" and 20"-36" Front & Back Plugs  
P/N 21-150

For 24"-48" Front & Back Plugs  
P/N 21-151

### CAUTION:

Block plugs to prevent moving.  
See Safety Instructions on  
page 36. Full safety  
information sent with each  
plug or see [www.lansas.com](http://www.lansas.com).

## RUPTURE PROTECTION PLUGS

PART #	ITEM DESCRIPTION
050-1530RP	15"-30" Back Plug with Rupture Protection
051-1530RP	15"-30" Front Plug with Rupture Protection
050-2036RP	20"-36" Back Plug with Rupture Protection
051-2036RP	20"-36" Front Plug with Rupture Protection
050-2448RP	24"-48" Back Plug with Rupture Protection
051-2448RP	24"-48" Front Plug with Rupture Protection



# PRODUCTS

MANUFACTURED BY VANDERLANS AND SONS, INC.

## MULTI-SIZE DOMEHEAD™



**The Lansas® Domehead™** is the most durable multi-size pipe plug available. The unique design of this plug is covered under two U.S. patents. The first patent relates to the 2-ply of cross biased tire cord reinforcement (more on larger sizes). This design allows for controlled expansion of the plug. As this plug inflates it gets larger in diameter and shorter in length. By changing the shape of the plug the side wall stress is kept to a minimum, and this feature also eliminates the longitudinal tearing (end to end) found in plugs by other manufacturers.

The second patent covers our superior end design. The ends are reinforced with a steel "spider™" ring wrapped in fabric. The fabric extends from the spider into the body of the plug. This advanced design transfers the stress of inflation from the steel base plate to the fabric reinforced spider ring.

These designs, along with the highest quality materials create a line of pipe plugs that are as much as 50% lighter and substantially more flexible than our competitors.

The Lansas® Domeheads™ are manufactured and stocked with our standard ozone protected natural rubber outer layer. They are also available with a nitrile or neoprene layer, as well as stainless steel end plates for use in chemical and petroleum applications.

The 050 Series Domehead™ Back Plugs are designed with lifting eye(s) on both end(s) and a 1/4" inflation port. Larger sizes have an additional 1/2" inflation port. The 051 Series Domehead™ Front is equipped like the back plug, however, it also includes a 1/4" + 3/4" test thru port for air testing and pressure monitoring.

**Custom Designs Always™ Available**

**CAUTION:**  
 Block plugs to prevent moving.  
 See Safety Instructions on  
 page 36. Full safety  
 information sent with each  
 plug or see [www.lansas.com](http://www.lansas.com).

# MULTI-SIZE DOMEHEAD™ – BACK PLUG

## FOR STOPPING PIPELINE FLOW

PART #	FOR PIPE SIZE	MINIMUM PIPE DIAMETER	MAXIMUM PIPE DIAMETER	REQUIRED INFLATION PRESSURE	MAXIMUM BACK/TEST PRESSURE	PRODUCT DIMENSIONS		
						LENGTH	DIAMETER	WEIGHT
050-46	4"-6"	3.50"	6.25"	30 PSI	15 PSI	9.0"	3.5"	1.0 LBS.
050-610	6"-10"	5.25"	10.25"	30 PSI	15 PSI	19.0"	5.0"	5.0 LBS.
050-812	8"-12"	7.25"	12.25"	25 PSI	15 PSI	20.0"	7.0"	8.0 LBS.
050-1016	10"-16"	9.50"	16.25"	25 PSI	15 PSI	30.0"	9.3"	26.0 LBS.
050-1218	12"-18"	11.50"	18.25"	25 PSI	15 PSI	30.0"	11.0"	29.0 LBS.
050-1224	12"-24"	11.50"	24.25"	25 PSI	15 PSI	41.0"	11.0"	36.0 LBS.
050-1530	15"-30"	14.00"	30.25"	20 PSI	8 PSI	55.0"	13.0"	49.0 LBS.
050-1530RP	15"-30"	14.00"	30.25"	20 PSI	8 PSI	55.0"	13.0"	49.0 LBS.
050-2036	20"-36"	19.00"	36.25"	20 PSI	8 PSI	64.0"	18.5"	85.0 LBS.
050-2036RP	20"-36"	19.00"	36.25"	20 PSI	8 PSI	64.0"	18.5"	85.0 LBS.
050-2448	24"-48"	22.00"	48.25"	15 PSI	8 PSI	84.0"	21.5"	98.0 LBS.
050-2448RP	24"-48"	22.00"	48.25"	15 PSI	8 PSI	84.0"	21.5"	98.0 LBS.
050-3660	36"-60"	34.50"	60.25"	10 PSI	6 PSI	84.0"	29.5"	150.0 LBS.
050-4278	42"-78"	37.00"	78.25"	10 PSI	6 PSI	101.0"	37.0"	280.0 LBS.
050-4872	48"-72"	46.00"	72.25"	10 PSI	6 PSI	84.0"	43.5"	340.0 LBS.
050-6096	60"-96"	58.00"	96.25"	10 PSI	6 PSI	110.0"	56.0"	720.0 LBS.

NOTE: 10x16 AND LARGER HAVE 2 INFLATION PORTS, (1) 1/2" and (1) 1/4" NPT

# MULTI-SIZE DOMEHEAD™ FRONT

## FOR AIR TESTING AND PRESSURE MONITORING

PART #	FOR PIPE SIZE	MINIMUM PIPE DIAMETER	MAXIMUM PIPE DIAMETER	REQUIRED INFLATION PRESSURE	MAXIMUM BACK/TEST PRESSURE	BY-PASS	PRODUCT DIMENSIONS		
							LENGTH	DIAMETER	WEIGHT
051-46	4"-6"	3.50"	6.25"	30 PSI	15 PSI	1/4" + 1/4"	9.0"	3.5"	1.5 LBS.
051-610	6"-10"	5.25"	10.25"	30 PSI	15 PSI	1/2" + 1/4"	19.0"	5.0"	7.5 LBS.
051-812	8"-12"	7.25"	12.25"	25 PSI	15 PSI	3/4" + 1/4"	20.0"	7.0"	11.0 LBS.
051-1016	10"-16"	9.50"	16.25"	25 PSI	15 PSI	3/4" + 1/4"	30.0"	9.3"	29.0 LBS.
051-1218	12"-18"	11.50"	18.25"	25 PSI	15 PSI	3/4" + 1/4"	30.0"	11.0"	30.0 LBS.
051-1224	12"-24"	11.50"	24.25"	25 PSI	15 PSI	3/4" + 1/4"	41.0"	11.0"	41.0 LBS.
051-1530	15"-30"	14.00"	30.25"	20 PSI	8 PSI	3/4" + 1/4"	55.0"	13.7"	51.0 LBS.
051-1530RP	15"-30"	14.00"	30.25"	20 PSI	8 PSI	3/4" + 1/4"	55.0"	13.7"	51.0 LBS.
051-2036	20"-36"	19.00"	36.25"	20 PSI	8 PSI	3/4" + 1/4"	64.0"	18.5"	89.0 LBS.
051-2036RP	20"-36"	19.00"	36.25"	20 PSI	8 PSI	3/4" + 1/4"	64.0"	18.5"	89.0 LBS.
051-2448	24"-48"	22.00"	48.25"	15 PSI	8 PSI	3/4" + 1/4"	84.0"	21.5"	102.0 LBS.
051-2448RP	24"-48"	22.00"	48.25"	15 PSI	8 PSI	3/4" + 1/4"	84.0"	21.5"	102.0 LBS.
051-3660	36"-60"	34.50"	60.25"	10 PSI	6 PSI	3/4" + 1/4"	84.0"	29.5"	160.0 LBS.
051-4278	42"-78"	37.00"	78.25"	10 PSI	6 PSI	3/4" + 1/4"	101.0"	37.0"	290.0 LBS.
051-4872	48"-72"	46.00"	72.25"	10 PSI	6 PSI	3/4" + 1/4"	84.0"	43.5"	350.0 LBS.
051-6096	60"-96"	58.00"	96.25"	10 PSI	6 PSI	3/4" + 1/4"	110.0"	56.0"	720.0 LBS.



PART #  
050-812

PART #  
051-812

PART #  
069-1530

**CAUTION:**  
Block plugs to prevent moving.  
See Safety Instructions on  
page 36. Full safety  
information sent with each  
plug or see [www.lansas.com](http://www.lansas.com).

SEE PAGES 31-34 FOR ACCESSORIES.



# PRODUCTS

MANUFACTURED BY VANDERLANS AND SONS, INC.

Patent #  
4,079,755 5,785,090 3,874,926

## MULTI-SIZE FLOW-THRU™

**THE MULTI-SIZE FLOW-THRU™** are built with the same patented designs as our multi and single-size Domehead™ plugs. (See pgs. 1-2 for design characteristics.)

The Flow-Thru™ plug goes one step further by offering a large bypass within the pipe plug. The bypasses are ideal for doing a water test or sewer bypass. Lansas® Flow-Thru plugs are available with standard bypasses up to 8" NPT. 12" threaded connections and larger flanged connections can be special ordered.

As with any Lansas® plug, the multi-size Flow-Thru's™ can be manufactured with nitrile or neoprene rubber and stainless steel components for use in chemical and petroleum applications.

Test caps are available to convert your Flow-Thru™ pipe plugs over to use in air testing applications (see pg. 36). A PVC cap is supplied with each plug with up to a 6" NPT by-pass.

Part #093-610

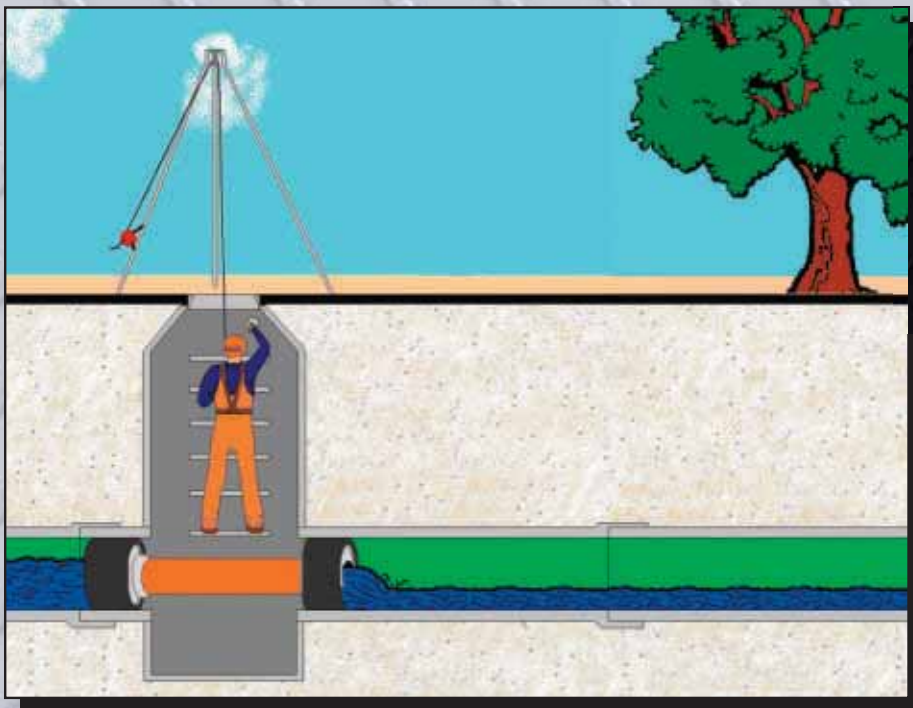


Part #094-1218



Part #098-1218

Two 12" X 18" multi-size Flow-Thru Plugs are shown; one with a 4" By-Pass, the other with an 8" By-Pass.



**CAUTION:**  
Block plugs to prevent moving.  
See Safety Instructions on page 36. Full safety information sent with each plug or see [www.lansas.com](http://www.lansas.com).

# MULTI-SIZE FLOW-THRU PLUG

PART #	FOR PIPE SIZE	MIN. PIPE DIA.	MAX. PIPE DIA.	REQUIRED INFLATION PRESSURE	MAXIMUM BACK/TEST PRESSURE	BY-PASS SIZE	PRODUCT DIMENSIONS		
							LENGTH	DIAMETER	WEIGHT
092-48	4"-8"	3.8"	8.25"	30 PSI	15 PSI	2"	14.0"	3.5"	6.5 LBS.
093-610	6"-10"	5.7"	10.25"	30 PSI	15 PSI	3"	20.0"	5.0"	11.0 LBS.
094-812	8"-12"	7.0"	12.25"	30 PSI	15 PSI	4"	20.0"	6.5"	25.0 LBS.
094-1016	10"-16"	9.5"	16.25"	25 PSI	15 PSI	4"	24.0"	9.0"	37.0 LBS.
096-1016	10"-16"	9.5"	16.25"	25 PSI	15 PSI	6"	28.0"	9.0"	40.0 LBS.
094-1218	12"-18"	11.0"	18.25"	25 PSI	15 PSI	4"	28.0"	10.5"	45.0 LBS.
096-1218	12"-18"	11.0"	18.25"	25 PSI	15 PSI	6"	28.0"	10.5"	48.0 LBS.
098-1218	12"-18"	11.0"	18.25"	25 PSI	15 PSI	8"	28.0"	10.5"	50.0 LBS.
094-1224	12"-24"	11.5"	24.25"	25 PSI	15 PSI	4"	41.0"	11.0"	65.0 LBS.
096-1224	12"-24"	11.5"	24.25"	25 PSI	15 PSI	6"	41.0"	11.0"	70.0 LBS.
098-1224	12"-24"	11.5"	24.25"	25 PSI	15 PSI	8"	41.0"	11.0"	75.0 LBS.
094-1530	15"-30"	14.3"	30.25"	20 PSI	8 PSI	4"	56.0"	14.0"	58.0 LBS.
096-1530	15"-30"	14.3"	30.25"	20 PSI	8 PSI	6"	52.0"	14.0"	115.0 LBS.
098-1530	15"-30"	14.3"	30.25"	20 PSI	8 PSI	8"	52.0"	14.0"	120.0 LBS.
094-2036	20"-36"	19.0"	36.25"	20 PSI	8 PSI	4"	64.0"	18.5"	102.0 LBS.
096-2036	20"-36"	19.0"	36.25"	20 PSI	8 PSI	6"	56.0"	18.5"	160.0 LBS.
098-2036	20"-36"	19.0"	36.25"	20 PSI	8 PSI	8"	56.0"	18.5"	163.0 LBS.
094-2448	24"-48"	22.0"	48.25"	15 PSI	8 PSI	4"	94.0"	21.5"	112.0 LBS.
096-2448	24"-48"	22.0"	48.25"	15 PSI	8 PSI	6"	94.0"	21.5"	159.0 LBS.
098-2448	24"-48"	22.0"	48.25"	15 PSI	8 PSI	8"	94.0"	21.5"	174.0 LBS.
094-3660	36"-60"	34.5"	60.25"	10 PSI	6 PSI	4"	98.0"	29.5"	165.0 LBS.
096-3660	36"-60"	34.5"	60.25"	10 PSI	6 PSI	6"	98.0"	29.5"	190.0 LBS.
098-3660	36"-60"	34.5"	60.25"	10 PSI	6 PSI	8"	98.0"	29.5"	210.0 LBS.
094-4278	42"-78"	37.0"	78.25"	10 PSI	6 PSI	4"	101.0"	37.0"	300.0 LBS.
096-4278	42"-78"	37.0"	78.25"	10 PSI	6 PSI	6"	101.0"	37.0"	320.0 LBS.
098-4278	42"-78"	37.0"	78.25"	10 PSI	6 PSI	8"	101.0"	37.0"	350.0 LBS.
094-4872	48"-72"	46.0"	72.25"	10 PSI	6 PSI	4"	84.0"	43.5"	360.0 LBS.
096-4872	48"-72"	46.0"	72.25"	10 PSI	6 PSI	6"	84.0"	43.5"	380.0 LBS.
098-4872	48"-72"	46.0"	72.25"	10 PSI	6 PSI	8"	84.0"	43.5"	410.0 LBS.
094-6096	60"-96"	58.0"	96.25"	10 PSI	6 PSI	4"	120.0"	56.0"	800.0 LBS.
096-6096	60"-96"	58.0"	96.25"	10 PSI	6 PSI	6"	120.0"	56.0"	873.0 LBS.
098-6096	60"-96"	58.0"	96.25"	10 PSI	6 PSI	8"	120.0"	56.0"	908.0 LBS.

See pages 6 and 7 for Single-Size By-Pass Plugs.

**Custom Designs  
Always™ Available**

36" x 48" with  
8" By-Pass  
(Custom)

20" x 30" with 6"  
By-Pass (FNPT)  
(Custom)



PART #  
323-20

**VANDERLANS AND SONS, INC.**

CORPORATE OFFICE: LODI, CALIFORNIA

Toll Free 1-800-452-4902

(209) 334-4115 • Sales Fax (209) 339-8260

STOCKING WAREHOUSES:

Atlanta, GA (770) 509-9309 • Minneapolis, MN (763) 428-9290

**CAUTION:**  
Block plugs to prevent moving.  
See Safety Instructions on  
page 36. Full safety  
information sent with each  
plug or see [www.lansas.com](http://www.lansas.com).



# PRODUCTS

MANUFACTURED BY VANDERLANS AND SONS, INC.

Patent #4,083,384

## MW™ PLUG

**CAUTION:**  
Block plugs to prevent moving.  
See Safety Instructions on  
page 36. Full safety  
information sent with each  
plug or see [www.lansas.com](http://www.lansas.com).

**THE LANSAS® MW™** is the most versatile and cost effective single-size pipe plug available.

Our 4" to 24" MW's™ are molded with "o-ring" sealing ribs and each plug is equipped with a replaceable bypass pipe.

Our 15" to 24" MW's™ are stocked with either a 4", 6", or 8" bypass.

For air or water testing, sewer bypass or simply stopping the flow, the MW™ offers the best value in single size plugs.

Test caps are available to convert your flow thru pipe plugs for use in air testing applications (see pg. 36). A PVC cap is supplied with each plug with up to a 6" NPT by-pass.



020 Series



### M.W. PLUG (MULTI-WORKER)™

PART #	FOR PIPE SIZE	MIN. PIPE DIA.	MAX. PIPE DIA.	REQUIRED INFLATION PRESSURE	MAXIMUM BACK/TEST PRESSURE	BY-PASS SIZE	PRODUCT DIMENSIONS		
							LENGTH	DIAMETER	WEIGHT
020-1.5	1.5"	1.4"	1.75"	60 PSI	20 PSI	1/8"	3.0"	1.3"	0.40 LBS.
020-02	2"	1.6"	2.25"	60 PSI	20 PSI	1/4"	4.5"	1.5"	0.70 LBS.
020-03	3"	2.5"	3.25"	50 PSI	20 PSI	3/4"	6.0"	2.4"	1.50 LBS.
020-34	3"-4"	2.6"	4.25"	45 PSI	15 PSI	3/4"	9.25"	2.6"	1.20 LBS.
020-04	4"	3.7"	4.25"	25 PSI	15 PSI	1"	9.0"	3.5"	2.00 LBS.
020-46	4"-6"	3.5"	6.25"	45 PSI	15 PSI	1"	13.5"	3.25"	2.20 LBS.
020-06	6"	5.0"	6.25"	25 PSI	15 PSI	2"	10.0"	4.5"	3.00 LBS.
020-68	6"-8"	4.7"	8.25"	35 PSI	15 PSI	2"	16.75"	4.5"	5.30 LBS.
020-15	14"-16"	13.0"	16.25"	25 PSI	15 PSI	4"	16.0"	12.75"	37.00 LBS.
020-18	18"	17.0"	18.25"	25 PSI	15 PSI	4"	16.0"	16.0"	43.00 LBS.
020-21	20"-21"	19.0"	21.25"	25 PSI	15 PSI	4"	16.0"	18.5"	51.00 LBS.
020-24	24"	23.0"	24.25"	25 PSI	15 PSI	4"	16.0"	22.0"	68.00 LBS.

\*For Multi-Size By-Pass Plugs, see pages 4 and 5.



# SINGLE SIZE TEST PLUG (SST)

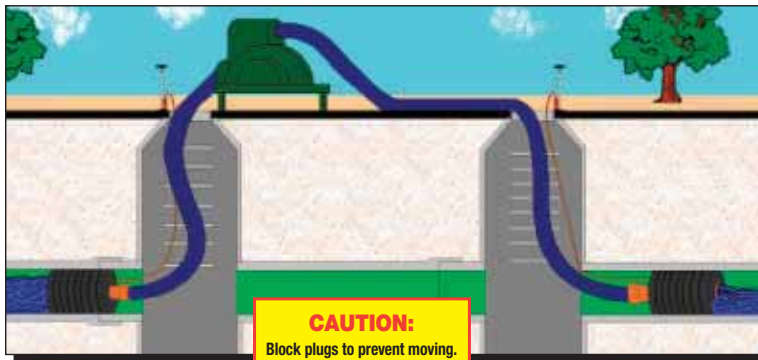
Lansas® is pleased to announce the release of our NEW SST (Single Size Test) Plugs. Though these are similar in function to our MW plugs, the SST is built with a newly formulated natural rubber compound. These plugs are the most durable, versatile, and toughest single size plugs available.

The SST Plug is designed with multi-function in mind. The SST Plugs are available in 8", 10", and 12" sizes, each of these have a 3" female aluminum by-pass. These plugs can be used to stop the flow, sewer by-pass, or for air testing. An air test conversion cap is supplied with every SST Plug.

SST Plug shown with our new Triple Test Hose. Available in 25' and 50' lengths.  
PART NO. 472-25

Test Cap Packages 545-01 545-02 Conversion Caps shown with optional air test fittings.

PART #	FOR PIPE SIZE	MINIMUM PIPE DIAMETER	MAXIMUM PIPE DIAMETER	REQUIRED INFLATION PRESSURE	MAXIMUM BACK TEST PRESSURE	PRODUCT DIMENSIONS			
						BY-PASS	LENGTH	DIAMETER	WEIGHT
025-08	8"	6.75"	8.25"	35 PSI	15 PSI	3"	8.75"	6.69"	6.25 LBS.
025-10	10"	8.75"	10.25"	35 PSI	15 PSI	3"	10.75"	8.63"	9.60 LBS.
025-12	12"	10.75"	12.25"	35 PSI	15 PSI	3"	12.75"	10.38"	13.5 LBS.



**CAUTION:**  
Block plugs to prevent moving. See Safety Instructions on page 36. Full safety information sent with each plug or see [www.lansas.com](http://www.lansas.com).

## VANDERLANS AND SONS, INC.

CORPORATE OFFICE: LODI, CALIFORNIA

Toll Free 1-800-452-4902

(209) 334-4115 • Sales Fax (209) 339-8260

STOCKING WAREHOUSES:

Atlanta, GA (770) 509-9309

Minneapolis, MN (763) 428-9290



# PRODUCTS

MANUFACTURED BY VANDERLANS AND SONS, INC.

## SINGLE & MULTI-SIZE SUPER-FLOW™ PLUGS

### SINGLE & MULTI-SIZE SUPER-FLOW™ PLUG SPECIFICATION TABLE

PART #.	FOR PIPE SIZE	MINIMUM PIPE DIAMETER	MAXIMUM PIPE DIAMETER	REQUIRED INFLATION PRESSURE	MAXIMUM BACK/TEST PRESSURE	BY-PASS SIZE	PRODUCT DIMENSIONS		
							LENGTH	DIAMETER	WEIGHT
<b>SINGLE</b>									
180-04	4"	3.75"	4.25"	25 PSI	10 PSI	3"	12.0"	3.50"	6 LBS.
180-06	6"	5.00"	6.25"	25 PSI	10 PSI	4"	14.0"	4.50"	9 LBS.
180-08	8"	7.00"	8.25"	25 PSI	10 PSI	6"	16.0"	6.50"	15 LBS.
180-10	10"	9.00"	10.25"	25 PSI	10 PSI	8"	20.0"	8.50"	24 LBS.
180-12	12"	11.00"	12.25"	25 PSI	10 PSI	10"	20.0"	10.50"	33 LBS.
180-15	14"-16"	13.00"	16.25"	25 PSI	10 PSI	12"	20.0"	12.75"	40 LBS.
180-18	18"	17.00"	18.25"	25 PSI	10 PSI	16"	20.0"	16.75"	50 LBS.
180-20	20"-21"	19.00"	21.25"	25 PSI	10 PSI	18"	20.0"	18.75"	63 LBS.
180-24	24"	22.00"	24.25"	25 PSI	10 PSI	20"	20.0"	20.75"	70 LBS.
<b>MULTI-SIZE</b>									
185-48	4"-8"	3.75"	8.25"	25 PSI	10 PSI	3"	16.0"	3.50"	7 LBS.
185-610	6"-10"	5.00"	10.25"	25 PSI	10 PSI	4"	20.0"	4.50"	13 LBS.
185-812	8"-12"	7.00"	12.25"	25 PSI	10 PSI	6"	20.0"	6.50"	19 LBS.
185-1016	10"-16"	9.00"	16.25"	25 PSI	10 PSI	8"	24.0"	8.75"	29 LBS.
185-1218	12"-18"	11.00"	18.25"	25 PSI	10 PSI	10"	24.0"	10.75"	38 LBS.
185-1421	14"-21"	13.00"	21.25"	25 PSI	10 PSI	12"	28.0"	12.75"	67 LBS.
185-1824	18"-24"	17.00"	24.25"	25 PSI	10 PSI	16"	28.0"	16.75"	79 LBS.
185-2030	20"-30"	19.00"	30.25"	25 PSI	10 PSI	18"	32.0"	18.75"	92 LBS.
185-2436	24"-36"	22.00"	36.25"	25 PSI	10 PSI	20"	48.0"	22.00"	176 LBS.

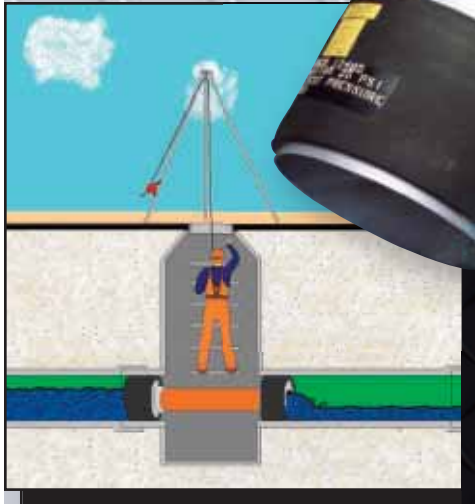
Shown with two 24" Super Flow™ Plugs and optional 20" By-Pass hose

★ Plugs and hose sold separately. Hose sold per foot in 5' increments.

#### THE LANSAS® SUPER-FLOW™

**PIPE PLUGS** are designed with the largest bypasses available. These pipe plugs are excellent for use in flow diversion and manhole rehab projects.

**Custom Designs Always™ Available**



**CAUTION:**  
Block plugs to prevent moving. See Safety Instructions on page 36. Full safety information sent with each plug or see [www.lansas.com](http://www.lansas.com).

# MULTI-SIZE INTERCHANGE™ PLUGS (REMOVABLE ENDS)

18"x24"  
Interchange™  
Plug w/10"  
Bypass



**CAUTION:**  
Block plugs to prevent moving.  
See Safety Instructions on  
page 36. Full safety  
information sent with each  
plug or see [www.lansas.com](http://www.lansas.com).

## INTERCHANGE PLUGS

Lansas® manufactures a variety of pipe plugs with interchangeable ends. Currently, these plugs are built to your specifications with the exact by-pass needed to fit your application. Pipe plug sizes start at 14" and can be manufactured as large as 96" in diameter. The flanged cover can be equipped with either threaded connections to 12" NPT, flanges or open tubing for use as a Super Flow™ style plug.

For example: a 24x36 multi-size plug could have a:  
12" NPT by-pass  
20" OD tube for use as a Super-Flow™  
or a 20" flange.

Sizes Available: 15" x 21"    15" x 30"  
18" x 24"    24" x 36"



**Custom Designs  
Always™ Available**

8" Flanged By-pass

PART #	FOR PIPE SIZE	MINIMUM PIPE DIAMETER	MAXIMUM PIPE DIAMETER	REQUIRED INFLATION PRESSURE	MAXIMUM TEST PRESSURE	PRODUCT DIMENSIONS		
						LENGTH	DIAMETER	WEIGHT
250-1521	15x21	15.00	21.25	20	10	24.0"	14.0"	44.0
250-1530	15x30	15.00	30.25	20	10	42.0"	14.0"	88.0
250-1824	18x24	17.25	24.25	20	10	24.0"	16.0"	57.0
250-2436	24x36	23.25	36.25	20	10	30.0"	22.0"	110.0

All plugs are sold without a cover. Choose a cover below. All covers are fabricated steel.

PART #	BY-PASS SIZE
<b>COVERS FOR 15" x 21" AND 15" x 30" PLUGS</b>	
259-15-04T	4" npt
259-15-06T	6" npt
259-15-08T	8" npt
259-15-10T	10" npt
259-15-12T	12" npt
259-15-08SF	8" tube
259-15-10SF	10" tube
259-15-12SF	12" tube
259-15-08FG	8" flange
259-15-10FG	10" flange
259-15-12FG	12" flange

PART #	BY-PASS SIZE
<b>COVERS FOR 18" x 24" PLUGS</b>	
259-18-04T	4" npt
259-18-06T	6" npt
259-18-08T	8" npt
259-18-10T	10" npt
259-18-12T	12" npt
259-18-08SF	8" tube
259-18-10SF	10" tube
259-18-12SF	12" tube
259-18-14SF	14" tube
259-18-08FG	8" flange
259-18-10FG	10" flange
259-18-12FG	12" flange
259-18-14FG	14" flange

PART #	BY-PASS SIZE
<b>COVERS FOR 24" x 36" PLUGS</b>	
259-24-04T	4" npt
259-24-06T	6" npt
259-24-08T	8" npt
259-24-10T	10" npt
259-24-12T	12" npt
259-24-08SF	8" tube
259-24-10SF	10" tube
259-24-12SF	12" tube
259-24-14SF	14" tube
259-24-16SF	16" tube
259-24-18SF	18" tube
259-24-20SF	20" tube
259-24-08FG	8" flange
259-24-10FG	10" flange
259-24-12FG	12" flange
259-24-14FG	14" flange
259-24-16FG	16" flange
259-24-18FG	18" flange
259-24-20FG	20" flange



# PRODUCTS

MANUFACTURED BY VANDERLANS AND SONS, INC.

## HIGH PRESSURE ROLL-UP™ PLUG

### LANSAS® HIGH PRESSURE PIPE PLUGS

are designed to seal the host pipe to pressures up to 150 PSI.

These pipe plugs are equipped with a centered bypass pipe for inducing your test medium into the pipe. Larger sizes also include a second bypass for monitoring the pressure and/or bleeding of the air out to the section being tested.

The bladder, which is reinforced with multiple plies of tire cord, is bonded to the inner metal mandrel. When this plug is inflated the ends roll up away from the mandrel. This allows the bladder to make contact with the pipe walls without applying unnecessary stress on the bladder.

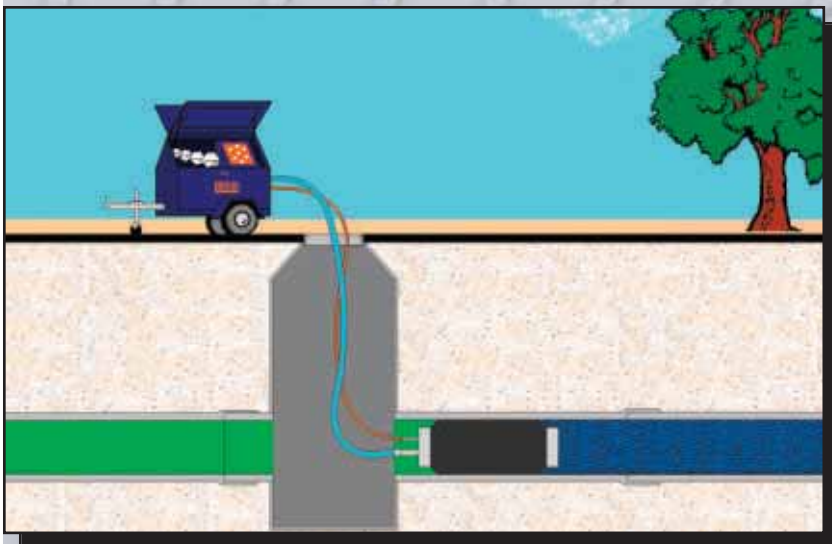
These plugs are excellent for use in water mains, force mains or industrial lines. As with all Lansas® products, the high pressure test plugs can be custom manufactured to meet the requirements of your job.



12" High Pressure Plug  
PART #045-12



Hydrostatic Pump used for inflating plug with water.  
PART #049-00



#### CAUTION:

Block plugs to prevent moving.  
See Safety Instructions on page 36. Full safety information sent with each plug or see [www.lansas.com](http://www.lansas.com).

### VANDERLANS AND SONS, INC.

CORPORATE OFFICE: LODI, CALIFORNIA

Toll Free 1-800-452-4902

(209) 334-4115 • Sales Fax (209) 339-8260

STOCKING WAREHOUSES:

Atlanta, GA (770) 509-9309

Minneapolis, MN (763) 428-9290

# HIGH PRESSURE PLUG

150 PSI TEST PRESSURE			SPECIFICATIONS						
PART #	REQUIRED INFLATION PRESSURE	MAXIMUM BACK/TEST PRESSURE	FOR PIPE SIZE	MIN. PIPE SIZE	MAX. PIPE SIZE	BY-PASS	PRODUCT DIMENSIONS		
							LENGTH	DIAMETER	WEIGHT
045-03	225 PSI	150 PSI	3"	2.8"	3.25"	3/4"	12.0"	2.75"	8 LBS.
045-04	225 PSI	150 PSI	4"	3.8"	4.25"	3/4"	12.0"	3.5"	10 LBS.
045-06	225 PSI	150 PSI	6"	5.5"	6.25"	3/4"	12.0"	5.0"	15 LBS.
045-08	225 PSI	150 PSI	8"	7.0"	8.25"	2"	12.0"	6.0"	20 LBS.
045-10	225 PSI	150 PSI	10"	9.0"	10.25"	2" + 3/4"	12.0"	8.0"	28 LBS.
045-12	225 PSI	150 PSI	12"	11.0"	12.25"	2" + 3/4"	12.0"	10.0"	37 LBS.
045-14	225 PSI	150 PSI	14"	13.0"	14.25"	2" + 3/4"	16.0"	12.0"	60 LBS.
045-15	225 PSI	150 PSI	15"	14.0"	15.25"	2" + 3/4"	16.0"	13.0"	65 LBS.
045-16	225 PSI	150 PSI	16"	15.0"	16.25"	2" + 3/4"	16.0"	14.0"	70 LBS.
045-18	225 PSI	150 PSI	18"	17.0"	18.25"	2" + 3/4"	16.0"	16.0"	90 LBS.
045-20	225 PSI	150 PSI	20"	19.0"	20.25"	2" + 3/4"	16.0"	18.0"	136 LBS.
045-21	225 PSI	150 PSI	21"	20.0"	21.25"	2" + 3/4"	16.0"	19.0"	145 LBS.
045-24	225 PSI	150 PSI	24"	23.0"	24.25"	2" + 3/4"	16.0"	22.0"	195 LBS.
045-27	225 PSI	150 PSI	27"	26.0"	27.25"	2" + 3/4"	16.0"	25.0"	215 LBS.
045-30	225 PSI	150 PSI	30"	29.0"	30.25"	2" + 3/4"	16.0"	28.0"	258 LBS.
045-33	225 PSI	150 PSI	33"	32.0"	33.25"	2" + 3/4"	16.0"	31.0"	313 LBS.
045-36	225 PSI	150 PSI	36"	35.0"	36.25"	2" + 3/4"	16.0"	34.0"	355 LBS.
045-39	225 PSI	150 PSI	39"	38.0"	39.25"	2" + 3/4"	16.0"	37.0"	375 LBS.
045-42	225 PSI	150 PSI	42"	41.0"	42.25"	2" + 3/4"	16.0"	40.0"	385 LBS.
045-45	225 PSI	150 PSI	45"	44.0"	45.25"	2" + 3/4"	16.0"	43.0"	465 LBS.
045-48	225 PSI	150 PSI	48"	47.0"	48.25"	2" + 3/4"	16.0"	46.0"	510 LBS.
045-54	225 PSI	150 PSI	54"	53.0"	54.25"	2" + 3/4"	16.0"	52.0"	670 LBS.
045-60	225 PSI	150 PSI	60"	59.0"	60.25"	2" + 3/4"	16.0"	58.0"	850 LBS.
045-66	225 PSI	150 PSI	66"	65.0"	66.25"	2" + 3/4"	16.0"	64.0"	950 LBS.
045-72	225 PSI	150 PSI	72"	71.0"	72.25"	2" + 3/4"	16.0"	70.0"	1200 LBS.
045-78	225 PSI	150 PSI	78"	77.0"	78.25"	2" + 3/4"	16.0"	76.0"	1230 LBS.
045-84	225 PSI	150 PSI	84"	83.0"	84.25"	2" + 3/4"	16.0"	82.0"	1240 LBS.
045-90	225 PSI	150 PSI	90"	89.0"	90.25"	2" + 3/4"	16.0"	88.0"	1525 LBS.
045-96	225 PSI	150 PSI	96"	95.0"	96.25"	2" + 3/4"	16.0"	94.0"	1600 LBS.

Larger by-pass sizes are available.

**CAUTION:**

Block plugs to prevent moving.  
See Safety Instructions on  
page 36. Full safety  
information sent with each  
plug or see [www.lansas.com](http://www.lansas.com).

PART #045-84



**Custom Designs  
Always™ Available**



# PRODUCTS

MANUFACTURED BY VANDERLANS AND SONS, INC.

## A.R. & SINGLE-SIZE BLOCKING PLUGS (SSB)

Plumbing and mechanical contractors agree that Lansas® Pipe Plugs are the most durable and reliable test plugs available.

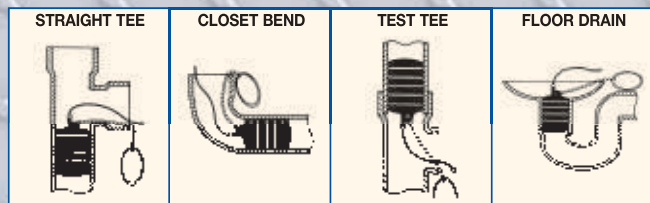
**THE AR™ PLUGS**, 1-1/4" – 6" feature a zinc plated chain and ring. The Lansas® AR™ plugs have a test pressure rating of as much as 15 PSI, air or water.

**THE SSB PLUGS** were developed to block sewer lines during an air test, or for blocking flows. These are the most economical inflatable plugs available. These plugs are designed with a newly formulated natural rubber compound, making them the toughest and most dependable single size plugs available.

Like the SST, the SSB plugs come with a removable 3/8" eyebolt and a removable 1/4" NPT tire inflation valve.



TYPICAL PIPE APPLICATION



### LANSAS® AR™ & SSB PLUGS SPECIFICATION TABLE

PART NO.	PIPE SIZE	MINIMUM PIPE DIAMETER	MAXIMUM PIPE DIAMETER	REQUIRED INFLATION PRESSURE	MAXIMUM TESTING PRESSURE	PRODUCT DIMENSIONS		
						LENGTH	DIAMETER	WEIGHT
030-.7515	.75"-1.50"	.70"	1.75"	30 PSI	15 PSI	5.75"	.625"	.6 LBS.
030-02	2"	1.8"	2.25"	30 PSI	10 PSI	6.0"	1.50"	.8 LBS.
030-03	3"	2.8"	3.25"	30 PSI	15 PSI	6.0"	2.60"	1.0 LBS.
030-34*	3"-4"	2.6"	4.25"	45 PSI	15 PSI	7.25"	2.50"	1.0 LBS.
030-04	4"	3.5"	4.25"	30 PSI	15 PSI	6.0"	3.30"	1.2 LBS.
030-46*	4"-6"	3.5"	6.25"	45 PSI	15 PSI	11.0"	3.40"	1.9 LBS.
030-06	6"	5.5"	6.25"	30 PSI	15 PSI	6.0"	4.80"	2.5 LBS.
030-68*	6"-8"	4.7"	8.25"	35 PSI	15 PSI	14.5"	4.50"	2.8 LBS.
035-08	8"	6.75"	8.25"	25 PSI	15 PSI	7.75"	6.69"	4.8 LBS.
035-10	10"	8.75"	10.25"	25 PSI	15 PSI	9.75"	8.63"	7.6 LBS.
035-12	12"	10.75"	12.25"	25 PSI	15 PSI	11.75"	10.38"	11.0 LBS.
030-15*	14" - 16"	13.0"	16.25"	25 PSI	15 PSI	16.0"	12.75"	30.0 LBS.
030-18*	18"	17.0"	18.25"	25 PSI	15 PSI	16.0"	16.00"	37.0 LBS.
030-21*	20" - 21"	19.0"	21.25"	25 PSI	15 PSI	16.0"	18.50"	45.0 LBS.
030-24*	24"	23.0"	24.25"	25 PSI	15 PSI	16.0"	22.00"	55.0 LBS.

\*Not equipped with chain and ring. Sizes 6" - 24" have a removable inflation fitting and eyebolt.

# LANSAS® LONG ALL RUBBER AR PLUGS™

**THE LONG AR™** is designed to be installed through a cleanout or floor drain and seal within the wye. With a pressure rating of 15 PSI, these plugs are excellent for use when pressure testing with air or water. The long AR plug is supplied with a 36" extension hose and a removable zinc-plated chain and ring.



*All long AR's include a 3' Extension Hose.*

*See page 32-34 for accessories.*

## LANSAS® LONG AR™ GRIP RIB™ SPECIFICATION TABLE

PART NO.	PIPE SIZE	MINIMUM PIPE DIAMETER	MAXIMUM PIPE DIAMETER	REQUIRED INFLATION PRESSURE	MAXIMUM TESTING PRESSURE	PRODUCT DIMENSIONS		
						LENGTH	DIAMETER	WEIGHT
031-02	2"	1.7"	2.25"	30 PSI	15 PSI	17.5"	1.5"	.5 LBS.
031-03	3"	2.7"	3.25"	30 PSI	15 PSI	19.5"	2.2"	1.0 LBS.
031-04	4"	3.5"	4.25"	30 PSI	10 PSI	23.0"	3.0"	2.0 LBS.
031-46	4"-6"	3.8"	6.25"	30 PSI	10 PSI	26.0"	3.6"	3.0 LBS.

## DISC PLUGS

**THE LANSAS® DISC PLUG** has been around for over 40 years. Constructed of rolled channel steel, the disc plugs come sectioned to fit through standard 24" manholes for easy installation. The Lansas® Disc Plug will provide a leak proof seal for construction, rehabilitation, cleaning and testing. The bladders for these pipe plugs are reinforced with 2 plies of nylon tire cord. Large sizes are available.



**CAUTION:**  
Block plugs to prevent moving.  
See Safety Instructions on page 36. Full safety information sent with each plug or see [www.lansas.com](http://www.lansas.com).

Patent #2,927,609

## SINGLE-SIZE DISC PLUGS

FOR AIR TESTING, PRESSURE MONITORING OR STOPPING PIPELINE FLOW

PART #	FOR PIPE SIZE	MINIMUM PIPE DIAMETER	MAXIMUM PIPE DIAMETER	REQUIRED INFLATION PRESSURE	MAXIMUM BACK/TEST PRESSURE	PRODUCT DIMENSIONS		
						LENGTH	DIAMETER	WEIGHT
010-24	24"	23.7"	24.25"	60 PSI	15 PSI	2.75"	23.5"	26.5 LBS.
010-27	27"	26.5"	27.25"	60 PSI	15 PSI	4.30"	26.0"	87.0 LBS.
010-30	30"	29.5"	30.25"	60 PSI	15 PSI	4.30"	29.0"	90.0 LBS.
010-33	33"	32.5"	33.25"	60 PSI	15 PSI	4.30"	32.0"	115.0 LBS.
010-36	36"	35.5"	36.25"	60 PSI	15 PSI	4.30"	35.0"	127.0 LBS.
010-39	39"	38.5"	39.25"	60 PSI	15 PSI	4.30"	38.0"	138.0 LBS.
010-42	42"	41.5"	42.25"	60 PSI	15 PSI	4.30"	41.0"	155.0 LBS.
010-45	45"	44.5"	45.25"	60 PSI	15 PSI	4.30"	44.0"	172.0 LBS.
010-48	48"	47.5"	48.25"	60 PSI	15 PSI	4.30"	47.0"	183.0 LBS.
010-54	54"	53.5"	54.25"	60 PSI	15 PSI	4.30"	53.0"	265.0 LBS.
010-60	60"	59.5"	60.25"	60 PSI	15 PSI	4.30"	59.0"	310.0 LBS.
010-66	66"	65.5"	66.25"	60 PSI	15 PSI	4.30"	65.0"	355.0 LBS.
010-72	72"	71.5"	72.25"	60 PSI	15 PSI	4.30"	71.0"	400.0 LBS.
010-78	78"	77.5"	78.25"	60 PSI	15 PSI	4.30"	77.0"	445.0 LBS.
010-84	84"	83.5"	84.25"	60 PSI	15 PSI	4.30"	83.0"	525.0 LBS.
010-90	90"	89.5"	90.25"	60 PSI	15 PSI	4.30"	89.0"	605.0 LBS.
010-96	96"	95.5"	96.25"	60 PSI	15 PSI	4.30"	95.0"	700.0 LBS.



# PRODUCTS

MANUFACTURED BY VANDERLANS AND SONS, INC.

## LOW & HIGH PRESSURE JOINT TESTERS

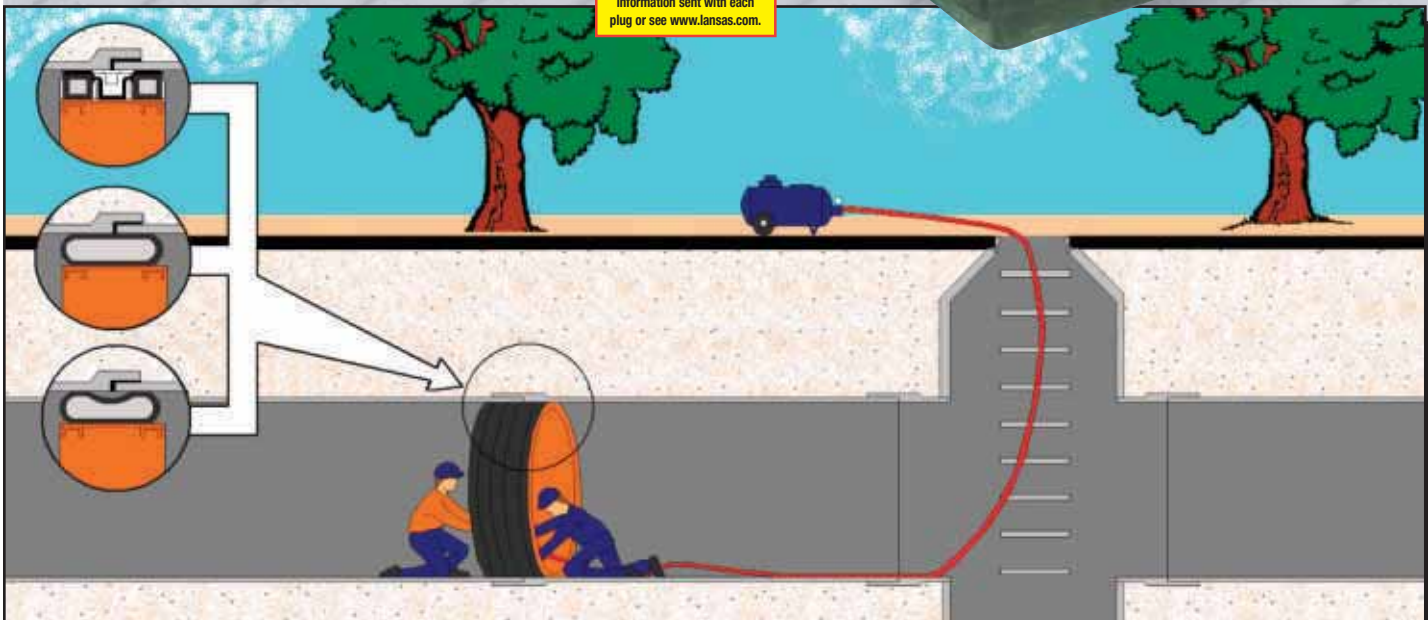
**THE LANSAS® SINGLE BLADDER JOINT TESTERS** are available for testing up to 100 PSI. They are designed to fit pipe sizes ranging from 24" - 120". Lansas® has manufactured joint testers to 21 feet in diameter and for pressures in excess of 200 PSI.

Each Lansas® joint tester is equipped with adjustable wheels that allow for easy transportation through the pipeline. A test panel is included.

**THE LANSAS® TEST PANEL** is designed to be used with air and/or water. There are no additional components that are needed. Lansas® joint testers can be used to test virtually any type of pipe material including concrete, ductile iron, polyethylene, PVC, steel, as well as concrete pipes with plastic liners.



**CAUTION:**  
Block plugs to prevent moving.  
See Safety Instructions on  
page 36. Full safety  
information sent with each  
plug or see [www.lansas.com](http://www.lansas.com).





# LOW & HIGH PRESSURE JOINT TESTERS

## SINGLE-SIZE LOW & HIGH PRESSURE JOINT TESTERS

20 PSI TEST PRESSURE			100 PSI TEST PRESSURE			SPECIFICATIONS		
PART #	MAXIMUM INFLATION PRESSURE	MAXIMUM TESTING PRESSURE	PART #	MAXIMUM INFLATION PRESSURE	MAXIMUM TESTING PRESSURE	FOR PIPE SIZE	MINIMUM PIPE SIZE	MAXIMUM PIPE SIZE
432-24	60 PSI	20 PSI	434-24	160 PSI	100 PSI	24"	23.0"	24.25"
432-27	60 PSI	20 PSI	434-27	160 PSI	100 PSI	27"	26.0"	27.25"
432-30	60 PSI	20 PSI	434-30	160 PSI	100 PSI	30"	29.0"	30.25"
432-33	60 PSI	20 PSI	434-33	160 PSI	100 PSI	33"	32.0"	33.25"
432-36	60 PSI	20 PSI	434-36	160 PSI	100 PSI	36"	35.0"	36.25"
432-39	60 PSI	20 PSI	434-39	160 PSI	100 PSI	39"	38.0"	39.25"
432-42	60 PSI	20 PSI	434-42	160 PSI	100 PSI	42"	41.0"	42.25"
432-45	60 PSI	20 PSI	434-45	160 PSI	100 PSI	45"	44.0"	45.25"
432-48	60 PSI	20 PSI	434-48	160 PSI	100 PSI	48"	47.0"	48.25"
432-54	60 PSI	20 PSI	434-54	160 PSI	100 PSI	54"	53.0"	54.25"
432-60	60 PSI	20 PSI	434-60	160 PSI	100 PSI	60"	59.0"	60.25"
432-66	60 PSI	20 PSI	434-66	160 PSI	100 PSI	66"	65.0"	66.25"
432-72	60 PSI	20 PSI	434-72	160 PSI	100 PSI	72"	71.0"	72.25"
432-78	60 PSI	20 PSI	434-78	160 PSI	100 PSI	78"	77.0"	78.25"
432-84	60 PSI	20 PSI	434-84	160 PSI	100 PSI	84"	83.0"	84.25"
432-90	60 PSI	20 PSI	434-90	160 PSI	100 PSI	90"	89.0"	90.25"
432-96	60 PSI	20 PSI	434-96	160 PSI	100 PSI	96"	95.0"	96.25"
432-102	60 PSI	20 PSI	434-102	160 PSI	100 PSI	102"	101.0"	102.25"
432-108	60 PSI	20 PSI	434-108	160 PSI	100 PSI	108"	107.0"	108.25"
432-114	60 PSI	20 PSI	434-114	160 PSI	100 PSI	114"	113.0"	114.25"
432-120	60 PSI	20 PSI	434-120	160 PSI	100 PSI	120"	119.0"	120.25"

**CUSTOM SIZES AND HIGHER TEST PRESSURE DESIGNS ARE AVAILABLE**

**CAUTION:**  
STAY CLEAR  
WHILE TESTING.

**DOUBLE BLADDER JOINT TESTERS AVAILABLE**

**CALL NOW**

THIS JOINT TESTER WAS DESIGNED AND BUILT FOR A WATER PROJECT NEAR PHOENIX, ARIZONA. EACH JOINT OF THIS 21' DIAMETER PIPE-LINE WAS TESTED AT 30 PSI.



# PRODUCTS

MANUFACTURED BY VANDERLANS AND SONS, INC.

## DOUBLE BLADDER LOW PRESSURE JOINT TESTERS



**THE LANSAS® DOUBLE BLADDER (DB)** design provides up to 9 inches of usage range allowing for the testing of deflected (up to 5%) fiberglass and plastic pipe.

- Fabric reinforced bladder makes the Lansas® DB joint tester more durable and longer lasting than comparable double bladder joint testers.
- Capable of testing with air or water as the media.
- Capable of testing up to 20 PSI.
- Replacement bladders are available and are field replaceable.
- Heavy duty adjustable wheels give the Lansas® DB joint tester a smooth ride in the pipe.
- The large testing void allows the joint tester to test the porosity of the pipe before the actual joint test. No failing tests because you are not accounting for the porosity of the pipe.

PART #	INFLATION	TEST PRESSURE	NOMINAL PIPE PRESSURE	MINIMUM PIPE SIZE	MAXIMUM PIPE DIAMETER
433-24	60 PSI	20 PSI	24"	22.00"	28.00"
433-27	60 PSI	20 PSI	27"	25.00"	31.00"
433-30	60 PSI	20 PSI	30"	28.00"	34.00"
433-33	60 PSI	20 PSI	33"	31.00"	37.00"
433-36	60 PSI	20 PSI	36"	33.00"	40.00"
433-39	60 PSI	20 PSI	39"	36.00"	43.00"
433-42	60 PSI	20 PSI	42"	39.00"	46.00"
433-45	60 PSI	20 PSI	45"	42.00"	49.00"
433-48	60 PSI	20 PSI	48"	45.00"	52.00"
433-54	60 PSI	20 PSI	54"	51.00"	58.00"
433-60	60 PSI	20 PSI	60"	57.00"	64.00"
433-66	60 PSI	20 PSI	66"	63.00"	71.00"
433-72	60 PSI	20 PSI	72"	69.00"	77.00"
433-78	60 PSI	20 PSI	78"	75.00"	83.00"
433-84	60 PSI	20 PSI	84"	81.00"	89.00"
433-90	60 PSI	20 PSI	90"	86.00"	95.00"
433-96	60 PSI	20 PSI	96"	91.00"	100.00"

**CAUTION:**  
 Block plugs to prevent moving.  
 See Safety Instructions on  
 page 36. Full safety  
 information sent with each  
 plug or see [www.lansas.com](http://www.lansas.com).



# MECHANICAL PIPE PLUGS

OUR PART #	FOR PIPE SIZE	MINIMUM PIPE DIA.	MAXIMUM PIPE DIA.	MAXIMUM TEST PRESSURE
611-06	6"	5.5"	7.0"	AIR OR WATER 5 PSI
611-08	8"	7.9"	9.0"	AIR OR WATER 5 PSI
*611-10	10"	9.5"	11.0"	AIR OR WATER 5 PSI
*611-12	12"	11.5"	13.0"	AIR OR WATER 5 PSI
*611-15	15"	14.5"	16.0"	AIR OR WATER 5 PSI
*611-18	18"	17.5"	19.0"	AIR OR WATER 5 PSI

611 SERIES

Series 611 will seal both the bell and spigot ends of most pipes.

\*Equipped with 1/2" Bypass Port



CAST ALUMINUM "POSI-SEAL"® MECHANICAL PLUG					
PART NO.	FOR PIPE SIZE	MINIMUM PIPE DIA.	MAXIMUM PIPE DIA.	MAXIMUM BACK PRESSURE AIR OR WATER	BY PASS
603-08	8"	7.75"	8.25"	7 PSI	1"
603-10	10"	9.25"	10.25"	7 PSI	1"
603-12	12"	11.40"	12.25"	7 PSI	1"
603-15	15"	14.50"	15.25"	5 PSI	1"
603-18	18"	17.50"	19.25"	5 PSI	1"
603-24	24"	23.60"	24.75"	5 PSI	2"
603-30	30"	29.30"	30.75"	3 PSI	2"
603-36	36"	34.60"	36.75"	3 PSI	2"

Posi-Seal® cast aluminum mechanical plugs can be used as "inside the pipe" plugs.

## HIGH IMPACT PLASTIC "POSI-SEAL"® MECHANICAL PLUG

PART NO.	FOR PIPE SIZE	MINIMUM PIPE DIA.	MAXIMUM PIPE DIA.	MAXIMUM BACK PRESSURE	
				AIR	WATER
<b>602 Posi-Seal® is for "End of Pipe"</b>					
602-04	4"	3.80"	4.06"	5 PSI	40' OF WATER
602-06	6"	5.77"	6.08"	5 PSI	30' OF WATER
602-08	8"	7.76"	8.03"	5 PSI	30' OF WATER
<b>605 Posi-Seal® is for "Inside of Pipe"</b>					
605-04	4"	3.78"	4.06"	5 PSI	40' OF WATER
605-06	6"	5.77"	6.08"	5 PSI	30' OF WATER
605-08	8"	7.76"	8.03"	5 PSI	30' OF WATER



602 SERIES

**CAUTION:**  
Block plugs to prevent moving.  
See Safety Instructions on page 36. Full safety information sent with each plug or see [www.lansas.com](http://www.lansas.com).



# PRODUCTS

MANUFACTURED BY VANDERLANS AND SONS, INC.

## VACUUM TESTING EQUIPMENT

### THE LANSAS® SMART BOX

**VACUUM KIT** is a complete package designed with everything needed to complete your manhole vacuum testing except the air compressor.

#### 151-812 KIT INCLUDES:

- (2) 050-812 Plugs
- (2) 321-20 20' Rope Hose & Gauge
- 110-38 38" Flat Plate
- 123-05 Super Air N Vac
- Easy Carry Case



PART #151-812

**CAUTION:**  
Block plugs to prevent moving.  
See Safety Instructions on page 36. Full safety information sent with each plug or see [www.lansas.com](http://www.lansas.com).



110-38 with 123-05

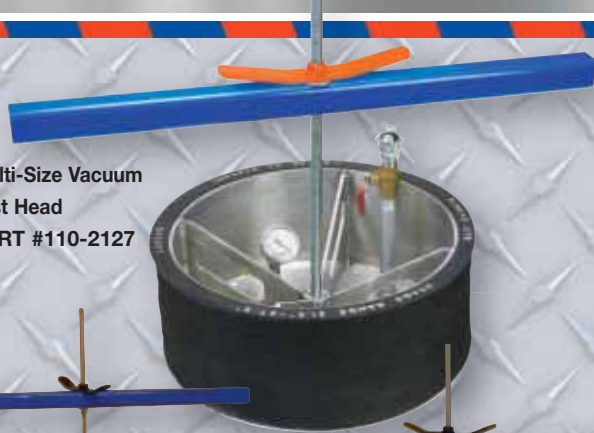


PART #123-05

**THE LANSAS® SUPER VAC™** is a lower cost alternative for manhole vacuum testing. The new Super Vac™ will pull over 40 CFM @ 10" Hg of vacuum. The Super Vac™ will deliver more than 50% more volume than others on the market. The unit has no moving parts nor does it require any maintenance.

# VACUUM TESTING EQUIPMENT

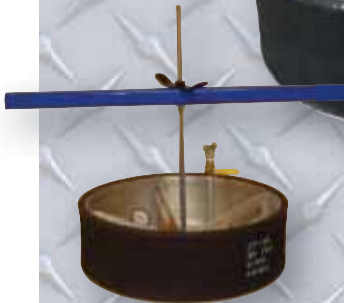
Multi-Size Vacuum Test Head  
PART #110-2127



P/N 110-3036



P/N 110-2733



## LANSAS® PRODUCTS IS PLEASED TO ANNOUNCE THE TRULY MULTI-SIZE BLADDER STYLE VACUUM TEST HEADS.

The bladder style units are made of lightweight aluminum. Our Wide Bladder™ technology gives these units the largest usage range available in the industry and allows for field replacement. The Super Wingnut™ makes adjusting the height of the unit quick and easy.

All of our Bladder Style Test Heads are supplied with a vacuum port, shut off valve, 30" of Mercury vacuum test gauge, vacuum relief valve, and durable support bar. The unit seals on the inside diameter of the manhole.

**CAUTION:**  
Block plugs to prevent moving.  
See Safety Instructions on page 36. Full safety information sent with each plug or see [www.lansas.com](http://www.lansas.com).

PART #110-38 with PART #110-38PC Plate Saver™

## THE LANSAS® FLAT PLATE ASSEMBLY'S

are made out of lightweight cast aluminum plate. Both the 38" and 44" plates have 3/4" of closed cell foam bonded to the plate. The soft closed cell pad makes it easy to get a vacuum seal and yet durable enough to be used over and over. The plate seals on either the manhole frame or the top of the manhole concrete structure. Both assemblies include all of the valves, gauges and fittings to complete your test.

## THE PLATE SAVER™ PROTECTIVE STORAGE COVER

– Most damage to the foam pad is done during transportation and storage. For a nominal cost you can save time and money. Excellent for Rental Companies to protect their investment.



## LANSAS® VACUUM TESTING EQUIPMENT

### COMPONENTS

PART #	ITEM DESCRIPTION	PART #	ITEM DESCRIPTION
110-2127	21.5"-27.5" Pneumatic Disc Assembly	131-30	0 - 30 Hg Gauge – Liquid Filled
110-2733	27"-33" Pneumatic Disc Assembly	110-2127B	Replacement Bladder – 21"-27" Test Head
110-3036	30"-36" Pneumatic Disc Assembly	110-2733B	Replacement Bladder – 27"-33" Test Head
110-38	38" Flat Plate Assembly 14.0" - 34.0"	110-3036B	Replacement Bladder – 30"-36" Test Head
110-44	44" Flat Plate Assembly 14.0" - 40.0"	110-24B	Replacement Bladder – 24" Test Head
123-05	Super Vac™ Vacuum Generator	110-30B	Replacement Bladder – 30" Test Head
100-38PC	Plate Saver™ Protective Storage Cover	110-38F	Foam Pad & Glue for 38" Flat Plate
150-812	Test Kit with 21"-27" Disc Head	110-44F	Foam Pad & Glue for 44" Flat Plate
151-812	Test Kit with 38" Flat Plate		



# PRODUCTS

MANUFACTURED BY VANDERLANS AND SONS, INC.

## AIR TESTING KITS

### LINE ACCEPTANCE KIT

#### THE LINE ACCEPTANCE KIT

contains an air test control panel, 50' triple hose, 20' inflation line with gauge and a hand pump.

**Custom Designs  
Always™ Available**



PART #455-00

### “SMART BOX™” LINE ACCEPTANCE KIT



**CAUTION:**  
Block plugs to prevent moving.  
See Safety Instructions on  
page 36. Full safety  
information sent with each  
plug or see [www.lansas.com](http://www.lansas.com).

**EACH “SMART BOX™” LINE ACCEPTANCE KIT** contains an air test panel, your choice of test plugs, 50' triple hose, 30' inflation line with gauge and a hand pump; all contained in a heavy duty plastic box.

#### PACKAGE OPTIONS:

- #453-08 ..... 8" Single Size Plugs  
*Includes either one 035-08 and 025-08 plug*
- #453-610 ..... 6" x10" Multi-Size Domehead Plugs  
*Includes one 050-610 plug and one 051-610 plug*
- #453-812 ..... 8" x12" Multi-Size Domhead Plugs  
*Includes one 050-812 plug and one 051-812 plug (SHOWN ABOVE)*

# LINE ACCEPTANCE / LEAK LOCATING KIT

460-500 Kit with manual hose reel (not shown)

461-500 Kit with motorized hose reel

**CAUTION:**  
Block plugs to prevent moving.  
See Safety Instructions on  
page 36. Full safety  
information sent with each  
plug or see [www.lansas.com](http://www.lansas.com).

**THE LANSAS® LINE ACCEPTANCE / LEAK LOCATING KITS** contain virtually all of the components necessary to get the job done. All that's needed is your choice of Lansas® test plugs. The two kits differ only in the hose reel. The hose reels each have 500' of color coded triple test hose, a three-way air swivel and are mounted on a heavy duty welded frame. The hose reel shown, Part #465-500, is equipped with an air motor for turning the reel, lubrication system and three-way control valve. Our other unit, Part #466-500, is equipped with a hand crank for turning the reel.

## PACKAGE CONTAINS:



**VANDERLANS AND SONS, INC.**

CORPORATE OFFICE: LODI, CALIFORNIA

(209) 334-4115 • Sales Fax (209) 339-8260 • Toll Free 1-800-452-4902

STOCKING WAREHOUSES:

Atlanta, GA (770) 509-9309 • Minneapolis, MN (763) 428-9290



# PRODUCTS

MANUFACTURED BY VANDERLANS AND SONS, INC.

## LANSAS® AIR TESTING TRAILER UNIT

**Custom Designs  
Always™ Available**

**CAUTION:**

Block plugs to prevent moving.  
See Safety Instructions on  
page 36. Full safety  
information sent with each  
plug or see [www.lansas.com](http://www.lansas.com).

PART #450-00

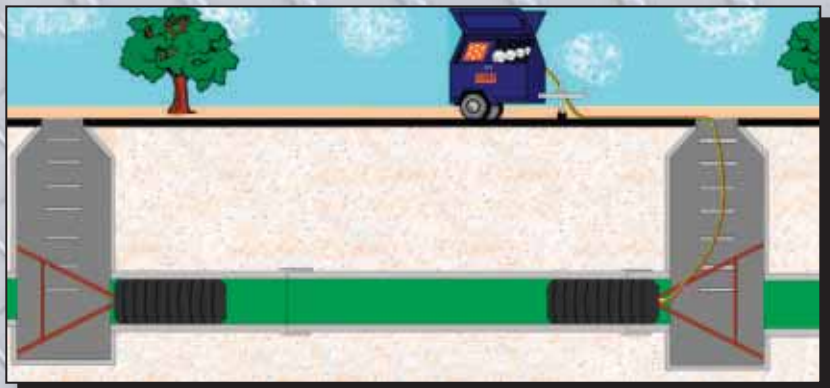
**PLUGS AND OTHER  
ACCESSORIES ARE  
SOLD SEPARATELY**

### AT LANSAS, OUR AIR TEST TRAILER

is built using a Wells Cargo brand trailer. Our standard unit is 6' x 8' and comes complete with:

- A 500' triple hose reel with an air motor drive,
- An electric start Honda motor on a 19 cfm air compressor,
- An air test panel; and
- 50' of triple test hose.

Air test trailers can be custom built as desired. We've made them as long as 16' with 80 cfm compressors, generators and vacuum pumps. Contact Lansas for more details.





# AIR TESTING ACCESSORIES



PART #465-500  
500' HOSE REEL  
with Air Motor



PART #470-00  
AIR TEST CONTROL PANEL  
with 3/4" test area valve  
and hose connection

TRIPLE HOSE  
TEST FITTINGS 12M-12MQC



8M-8MQC

4M-4MQC

PART #485-1030  
0-10-30 PSI  
LIQUID FILLED RETARD GAUGE  
1/4" CBM



PART #  
530-60



471 SERIES TRIPLE HOSE  
with 3/4" test area hose



PART #479-22  
SPACE HOSE

**CAUTION:**  
Block plugs to prevent moving.  
See Safety Instructions on  
page 36. Full safety  
information sent with each  
plug or see [www.lansas.com](http://www.lansas.com).

PART #500-00  
MANHOLE JACK

PART #501-00  
REPLACEMENT SPOOL



PART #510-00 MANHOLE WINCH  
with 600' of 3/16" Plastic Coated Cable  
PART #511-00 Same with Footage Counter  
PART #512-00 Replacement Counter



PART #472  
SMART TRIPLE TEST HOSE  
Valves and gauges needed  
for plug inflation and testing



PART #  
510-00

## VANDERLANS AND SONS, INC.

CORPORATE OFFICE: LODI, CALIFORNIA

(209) 334-4115 • Sales Fax (209) 339-8260 • Toll Free 1-800-452-4902

STOCKING WAREHOUSES:

Atlanta, GA (770) 509-9309 • Minneapolis, MN (763) 428-9290



# PRODUCTS

MANUFACTURED BY VANDERLANS AND SONS, INC.

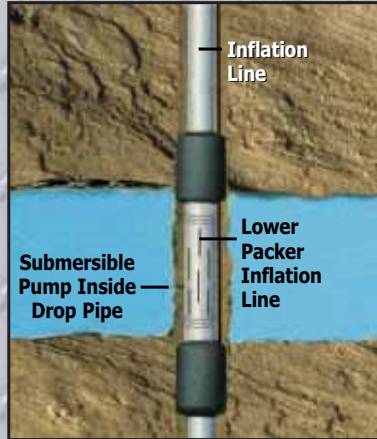
## WELL PACKERS

**CAUTION:**  
Block plugs to prevent moving.  
See Safety Instructions on  
page 36. Full safety  
information sent with each  
plug or see [www.lansas.com](http://www.lansas.com).

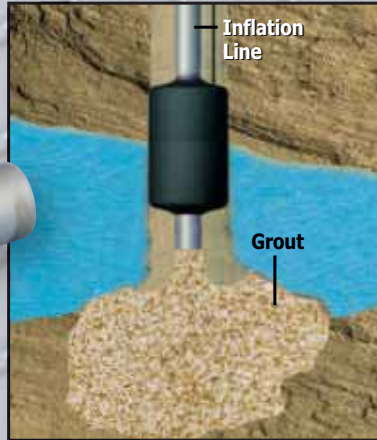
### THE LANSAS® WELL PACKERS

have many applications. They are commonly used for taking water samples from different levels in the well. Another use is to isolate sections of the well to prevent contaminants from entering the pump system.

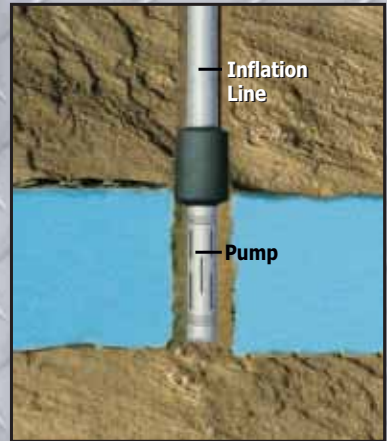
Lansas® packers are manufactured with multiple layers of fabric reinforcement to withstand several hundred PSI. All Lansas® packers are made to order in sizes ranging from 1" to 24" using either carbon or stainless steel. You may also choose to use nitrile, neoprene or natural rubber.



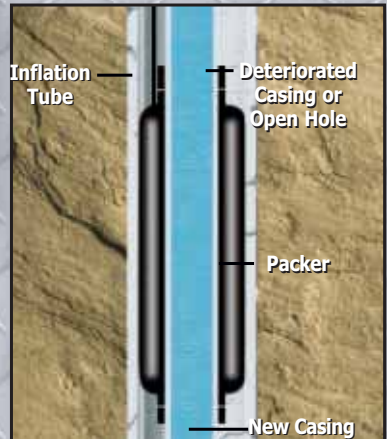
Between Packer Sampling



Below Packer Sampling



Grouting



Relining Deteriorated Casing



12" Well Packer



10" Well Packer

# SPOT REPAIR CARRIER



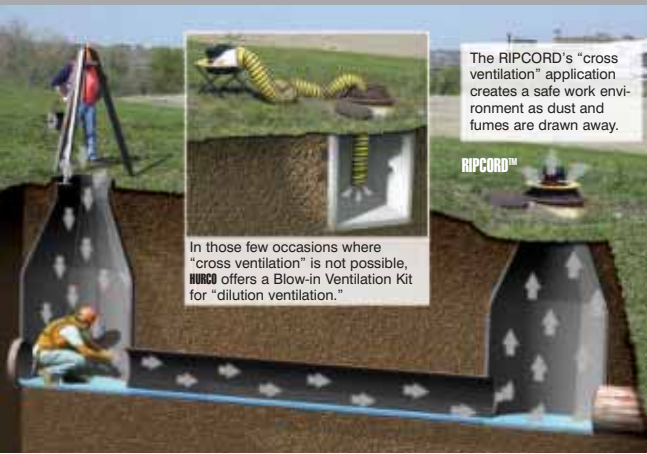
**CAUTION:**  
Block plugs to prevent moving.  
See Safety Instructions on  
page 36. Full safety  
information sent with each  
plug or see [www.lansas.com](http://www.lansas.com).

**Custom Designs  
Always™ Available**

**THE LANSAS® SPOT REPAIR CARRIER**  
has been designed for use with most of the spot repair systems on the market today. This unit is designed with reinforced natural rubber. The ball style ends and small diameter allow these units to pass through most offset joints. Wheels are also available by special order.

PART #	FOR PIPE SIZE	MAXIMUM INFLATION PRESSURE	APPROX. CONTACT AREA AT RATED PSI BASED ON PIPE SIZE			MAXIMUM PIPE DIAMETER	DEFLATED DIAMETER CARRIER BODY	BY-PASS SIZE (HOSE I.D.)	INFLATION PORT
<b>FIRST CONTACT WITH PIPE &lt; 15 PSI</b>			<b>6"</b>	<b>8"</b>	<b>10"</b>				
805-610-05	6"-10"	25 PSI	50"	50"	47"	10.25"	4.25"	1.5"	1/8" (F) NPT
805-610-08	6"-10"	25 PSI	85"	85"	83"	10.25"	4.25"	1.5"	1/8" (F) NPT
805-610-10	6"-10"	25 PSI	109"	109"	107"	10.25"	4.25"	1.5"	1/8" (F) NPT
805-610-12	6"-10"	25 PSI	133"	133"	131"	10.25"	4.25"	1.5"	1/8" (F) NPT
805-610-15	6"-10"	25 PSI	179"	179"	177"	10.25"	4.25"	1.5"	1/8" (F) NPT
<b>FIRST CONTACT WITH PIPE &lt; 15 PSI</b>			<b>8"</b>	<b>10"</b>	<b>12"</b>				
805-812-05	8"-12"	25 PSI	48"	46"	45"	12.25"	5.25"	2.0"	1/4" (F) NPT
805-812-08	8"-12"	25 PSI	84"	82"	81"	12.25"	5.25"	2.0"	1/4" (F) NPT
805-812-10	8"-12"	25 PSI	108"	106"	105"	12.25"	5.25"	2.0"	1/4" (F) NPT
805-812-12	8"-12"	25 PSI	132"	130"	129"	12.25"	5.25"	2.0"	1/4" (F) NPT
805-812-15	8"-12"	25 PSI	168"	164"	163"	12.25"	5.25"	2.0"	1/4" (F) NPT
<b>FIRST CONTACT WITH PIPE &lt; 15 PSI</b>			<b>12"</b>	<b>15"</b>	<b>18"</b>				
805-1218-05	12"-18"	20 PSI	49"	44"	43"	18.25"	8.75"	3.0"	1/4" (F) NPT
805-1218-08	12"-18"	20 PSI	85"	80"	79"	18.25"	8.75"	3.0"	1/4" (F) NPT
805-1218-10	12"-18"	20 PSI	109"	104"	103"	18.25"	8.75"	3.0"	1/4" (F) NPT
805-1218-12	12"-18"	20 PSI	133"	128"	127"	18.25"	8.75"	3.0"	1/4" (F) NPT
805-1218-15	12"-18"	20 PSI	169"	164"	163"	18.25"	8.75"	3.0"	1/4" (F) NPT
<b>FIRST CONTACT WITH PIPE &lt; 8 PSI</b>			<b>18"</b>	<b>20"</b>	<b>24"</b>				
805-1824-05	18"-24"	15 PSI	47"	44"	42"	24.25"	14.75"	4.0"	1/4" (F) NPT
805-1824-08	18"-24"	15 PSI	83"	80"	78"	24.25"	14.75"	4.0"	1/4" (F) NPT
805-1824-10	18"-24"	15 PSI	107"	104"	102"	24.25"	14.75"	4.0"	1/4" (F) NPT
805-1824-12	18"-24"	15 PSI	131"	128"	126"	24.25"	14.75"	4.0"	1/4" (F) NPT
805-1824-15	18"-24"	15 PSI	167"	164"	162"	24.25"	14.75"	4.0"	1/4" (F) NPT

## RIPCORD VENTILATOR-STRINGER



## Serious CFM for a Safe Manhole!

OSHA requires continuous ventilation of manhole workspaces and HURCO helps you safely and efficiently comply. HURCO's Original RIPCORD™ is the first ventilator specifically designed for our industry. Our unique "axial flow impeller" removes dangerous gases creating a safe unobstructed workspace.

HURCO's RIPCORD™ and Super RIPCORD™ feature precision balanced cast aluminum impellers for maximum air movement at high resistance.

- RIPCORD™ - up to 4,130 CFM @ 3.0 static pressure.
- Super RIPCORD™ - up to 8,761 CFM @ 3.0 static pressure.

HURCO also offers a "Stringer Kit" for retrieving ropes and cables for TV inspection equipment, cleaning equipment and deflection gauges.



RIPCORD



Vent Kit  
As a blow-in, up to 2,000 CFM  
(RIPCORD™ not included)



Stringer Kit



Rope Reels

## DEFLECTION GAUGES



Stationary Deflection Test Gauges



Multi-Size Deflection Test Gauges

## No Other Gauge MEASURES UP

**CAUTION:**  
Block plugs to prevent moving.  
See Safety Instructions on page 36. Full safety information sent with each plug or see [www.lanzas.com](http://www.lanzas.com).

When new PVC, polyethylene, ductile iron and fiberglass sewer pipes are installed, deflection testing is always part of the process.

Our Stationary Steel Gauges, Multi-Size Steel Gauges and our new aluminum Whistle Gauges™ are:

- Manufactured with exact precision.
- Clearly marked and serialized with part number, dimension and ASTM information.
- The industry's only full line of gauges manufactured with the correct number of skids to accurately gauge deflection.
- Field certifiable without proving rings.
- Sized to fit through 24" manhole openings.
- Powder coated for a durable finish.

Standard and Special Order End Plates

Proving Rings



**VANDERLANS & SONS, INC.**  
**1-800-452-4902**

# Distributor for Hurco Products

## RIPCORD SMOKER, RIPCORD SUPER SMOKER

We're not just **Blowin' Smoke!**

### The Complete Smoke Testing System

Efficient and cost effective, smoke testing has become a **worldwide standard** of finding leaks in sewer and plumbing systems. **HURCO** provides all you need to manage a complete smoke testing program better and more profitably:

- Laboratory Tested Safe LiquiSmoke™
- Equipment & supplies
- Training
  - Videos
  - Online
- Smoketesting management software
- Community awareness program
  - Radio
  - TV
  - Print
  - Online



Original RIPCORD Smoker™ with LiquiSmoke™



**SuperJet™** is a super heating muffler that raises the temperature of **HURCO's LiquiSmoke™** to beyond it's flash point giving a true atomization of the **LiquiSmoke™** fluid. The result? A nearly 100% burn of the **LiquiSmoke™** fluid, more accurate control of the smoke and a tremendous cost savings.



**SuperJet™**  
Patent #7,050,709

## OLD FAITHFUL (HYDROSTATIC TEST PUMPS)



Old Faithful Super Pumper

We're **Pumped Up** for your water main test!

Hydrostatic testing insures the quality installation of new or repaired water mains and sewer force mains.

Like its namesake, the "Old Faithful™" line of hydrostatic test pumps are engineered for reliability and durability, with low cost maintenance and nearly "wear free" operation:

- Pumps can handle up to 10% chlorine solution.
- Unique manifold system eliminates leak points and reduces the amount of work required to repair the pump or replace the diaphragms.
- Bypass relief valve reduces risk of damaging pump.



Optional equipment includes a Pressure Washing Kit. The two diaphragm model offers a Float Controlled Water Reservoir that can be used instead of a barrel and allows attachment of a pressure water source. It can also be used to mix chlorine solutions.



Old Faithful Pumper (pictured with optional Pressure Washer and Water Reservoir)

**Lansas**® stocks Hurco Products in Lodi, CA & Atlanta GA



# PRODUCTS

MANUFACTURED BY VANDERLANS AND SONS, INC.

## “EZ-PLUG™” ADAPTERS & ACCESSORIES



PART #  
#711-23

EZ-Plug™  
Bypass Adapter  
Model #700



EZ-Plug™ Bypass Adapter  
Model #705



“E-Z PLUG™” ADAPTERS & ACCESSORIES	
PART #	ITEM DESCRIPTION
700-00	E-Z Plug Adapter (Bolt On)
705-00	E-Z Plug Adapter (By-Pass)
711-23	E-Z Plug Pole (fiberglass, telescoping)



8" x 12" Back shown  
with a model #700  
E-Z Plug Adapter

A model #705  
E-Z Plug Adaptor  
shown with the  
new 8" SST Plug



**CAUTION:**  
Block plugs to prevent moving.  
See Safety Instructions on  
page 36. Full safety  
information sent with each  
plug or see [www.lansas.com](http://www.lansas.com).

**THE LANSAS® “E-Z PLUG™” SYSTEM** is designed to provide a safe, fast, and cost effective method for plugging gravity flow pipe lines. The “E-Z Plug™” system will utilize an adapter and either a new or existing single or multi-size test plug or bypass plug. By using the “E-Z Plug™” system you will eliminate the need to set up for confined space entry when installing test plugs.

The time required to install a test plug will be reduced to only a few minutes. The cost will be reduced by thousands of dollars by eliminating ventilators, safety harnesses, gas detectors, and other costly equipment. The Lansas® “E-Z Plug™” system is designed to save time and money on every job.

Use the “E-Z Plug™” adapter on plugs for use in up to 12” lines.

*Plugs, Poles and Adapters Sold Separately. See page 35-38 for hose accessories.*

**Custom Designs Always™ Available**



▲ These 30" plugs have a 24" flange bypass. Shipped in 8 days.



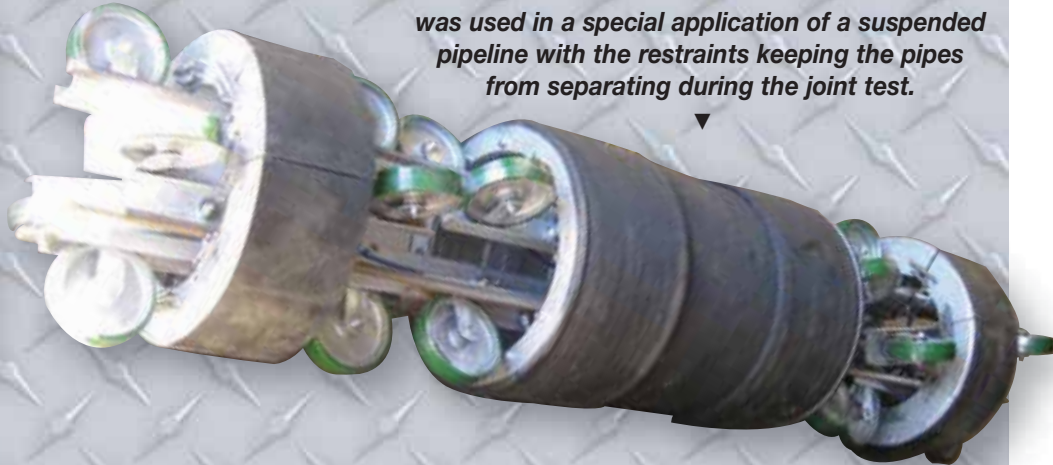
▲ This "Slip Fit" bladder and tube shipped in three days.



▲ Special Made Disc Plugs



▼ Super big "Super-Flow™" plugs. Two 42" plugs with a 24" flexible bypass. Out the door in just eight days.



▼ Custom made High Pressure High Joint Tester with air actuated restraints. This Joint Tester was used in a special application of a suspended pipeline with the restraints keeping the pipes from separating during the joint test.



▼ Interchange plug with two 6" threaded bypasses. Same day shipping.



**CAUTION:**  
 Block plugs to prevent moving. See Safety Instructions on page 36. Full safety information sent with each plug or see [www.lansas.com](http://www.lansas.com).



# PRODUCTS

MANUFACTURED BY VANDERLANS AND SONS, INC.

## SINGLE AND MULTI-SIZE WASHING BALLS



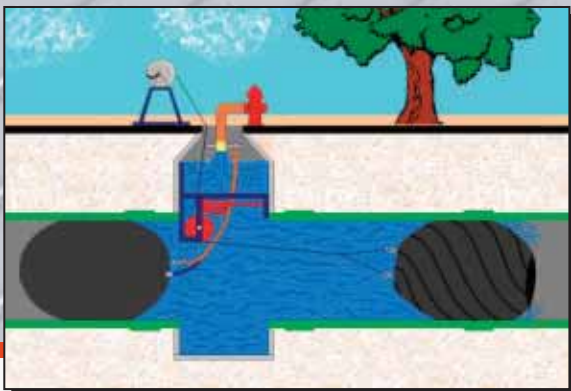
**LANSAS® SINGLE- AND MULTI-SIZE WASHING BALLS** are designed with diagonal ribbing along the periphery. This design, along with adequate head pressure, creates a water vortex action along the pipe walls. This action will wash away packed sand, sludge, rock, grease, and other debris.

The multi-size washing ball is built with the same design and construction as our domehead plugs. These balls have a water fill port that allows the user to control the buoyancy. This feature enhance the performance of these products.

### SINGLE & MULTI-SIZE WASHING BALLS

PART #	FOR PIPE SIZE	MINIMUM PIPE DIAMETER	MAXIMUM PIPE DIAMETER	REQUIRED INFLATION PRESSURE	PRODUCT DIMENSIONS		
					LENGTH	DIAMETER	WEIGHT
200-04	4"	3.5"	4.5"	INFLATE	7.5"	3.0"	1.0 LBS.
200-06	6"	5.5"	6.5"	UNTIL	8.5"	5.0"	2.0 LBS.
200-08	8"	7.5"	8.5"	THE	10.5"	7.0"	5.0 LBS.
200-10	10"	9.5"	10.5"	BALL	12.5"	9.0"	6.5 LBS.
200-12	12"	11.5"	12.5"	FITS	14.5"	11.0"	10.0 LBS.
200-15	15"	14.5"	15.5"	SNUG	17.5"	14.0"	12.0LBS.
210-1518	15"-18"	14.5"	18.5"	INFLATE	25.0"	10.0"	18.0 LBS.
210-1824	18"-24"	17.5"	24.5"	UNTIL	32.0"	14.0"	50.0 LBS.
210-2030	20"-30"	19.5"	30.5"	THE	42.0"	16.0"	60.0 LBS.
210-2436	24"-36"	23.0"	36.5"	BALL	55.0"	16.0"	80.0 LBS.
210-3648	36"-48"	35.0"	48.5"	FITS	84.0"	22.0"	120.0 LBS.
210-4860	48"-60"	47.0"	60.5"	SNUG	76.0"	34.0"	175.0 LBS.

See page 25 for information on manhole winches and jacks.



**Custom Designs Always™ Available**

**CAUTION:**  
Block plugs to prevent moving. See Safety Instructions on page 36. Full safety information sent with each plug or see [www.lansas.com](http://www.lansas.com).



# PROTECTIVE SLEEVES



Part #051-2448 with  
#069-2448 installed

**EXCELLENT  
FOR USE  
WITH  
RENTAL  
PLUGS**

## EXTEND THE LIFE OF YOUR PLUGS!

**THE LANSAS® PROTECTIVE SLEEVES** not only protect the plug while being moved around the job site, but stays on the plug while inflated in the pipe line. These sleeves help eliminate damage from pipeline debris, degraded pipe, and more.

**CAUTION:**  
Block plugs to prevent moving.  
See Safety Instructions on  
page 36. Full safety  
information sent with each  
plug or see [www.lansas.com](http://www.lansas.com).



Part #069-1530

PART #	FITS PLUGS WITH NOTED PART NUMBERS	WEIGHT
069-1224	050-1224, 051-1224	18 LBS.
069-1530	050-1530, 051-1530, 094-1530	21 LBS.
069-2036	050-2036, 051-2036, 094-2036	30 LBS.
069-2448	050-2448, 051-2448, 094-2448, 096-2448, 098-2448	65 LBS.
069-3660	050-3660, 051-3660, 094-3660, 096-3660, 098-3660	78 LBS.
069-4278	050-4278, 051-4278, 094-4278, 096-4278, 098-4278	93 LBS.
069-4872	050-4872, 051-4872, 094-4872, 096-4872, 098-4872	89 LBS.
069-6096	050-6096, 051-6096, 094-6096, 096-6096, 098-6096	166 LBS.



# PRODUCTS

MANUFACTURED BY VANDERLANS AND SONS, INC.

## ACCESSORIES

### POLY LIFT ROPE/INFLATION HOSE (1/4" I.D.)

- 320-20 ..... One 20 ft. length
- 320-30 ..... One 30 ft. length
- 320-40 ..... One 40 ft. length



PART #  
320-20



PART #  
321-20

### POLY LIFT ROPE/INFLATION HOSE WITH GAUGE (1/4" I.D.)

- 321-20 ..... One 20 ft. length
- 321-30 ..... One 30 ft. length
- 321-40 ..... One 40 ft. length

PART #  
330-03

### EXTENSION HOSE (1/4" I.D.)

- 330-02 ..... One 2 ft. length
- 330-03 ..... One 3 ft. length
- 330-05 ..... One 5 ft. length
- 330-10 ..... One 10 ft. length
- 330-20 ..... One 20 ft. length
- 330-30 ..... One 30 ft. length
- 330-40 ..... One 40 ft. length

### DURA-LIFT™ ROPE/INFLATION HOSE (3/8" HYDRAULIC HOSE) WITH GAUGE

- 323-20 ..... One 20 ft. length
- 323-30 ..... One 30 ft. length
- 323-40 ..... One 40 ft. length

**CAUTION:**

Block plugs to prevent moving.  
See Safety Instructions on  
page 36. Full safety  
information sent with each  
plug or see [www.lansas.com](http://www.lansas.com).

## CUSTOM HOSE LENGTHS AVAILABLE

### INFLATION ASSEMBLY WITH HOSE, 0-60 PSI GAUGE AND INFLATION FITTING

- 350-20 ..... One 20 ft. length
- 350-30 ..... One 30 ft. length
- 350-40 ..... One 40 ft. length



PART #  
323-20

PART #  
350-20

# ACCESSORIES

## TEST CAPS & ACCESSORIES

PART #	ITEM DESCRIPTION
440-01	1"x3/4" Reducer with Test Ports
440-02	2"x3/4" Reducer with Test Ports
440-03	3" PVC Cap with Test Ports
440-04	4" PVC Cap with Test Ports
440-06	6" PVC Cap with Test Ports
443-02	2" Steel Cap with Test Ports
443-03	3" Steel Cap with Test Ports
443-04	4" Steel Cap with Test Ports
443-06	6" Steel Cap with Test Ports
443-08	8" Steel Cap with Test Ports
545-00	Conversion Plug 1/2" & 1/4" Test Port
545-01	Conversion Plug 3/4" CHI & 1/4" MQC
545-02	Conversion Plug 3/4" MQC & 1/4" MQC



## TEST AREA HOSE WITH GAUGE

- 335-20 . . . . . One 20 ft. length
- 335-30 . . . . . One 30 ft. length
- 335-40 . . . . . One 40 ft. length



PART #  
335-20

## 3/4" TEST AREA FILL LINE/INFLATION LINE

- 345-20 . . . . . One 20 ft. length
- 345-30 . . . . . One 30 ft. length
- 345-40 . . . . . One 40 ft. length



PART #  
345-20

## GAUGES Protective Cover Supplied with #530-60

- 530-60 . . . . . 0 - 60 PSI
- 530-300 . . . . . 0 - 300 PSI
- 535-00 . . . . . Cover



**CAUTION:**  
Block plugs to prevent moving.  
See Safety Instructions on  
page 36. Full safety  
information sent with each  
plug or see [www.lansas.com](http://www.lansas.com).

## INFLATION FITTINGS (TANK VALVES)

- 540-14 . . . . . 1/4" N.P.T.
- 540-18 . . . . . 1/8" N.P.T.



## HIGH PRESSURE HAND PUMP w/GAUGE

- 310-00 . . . . . 0-125 PSI



## MISCELLANEOUS PARTS



CONSULT THE FACTORY FOR PRICING

**CAUTION:**  
Block plugs to prevent moving. See Safety Instructions on page 36. Full safety information sent with each plug or see [www.lansas.com](http://www.lansas.com).

# TERMS AND CONDITIONS



## CAUTION:

Block plugs to prevent moving.  
See Safety Instructions on  
page 36. Full safety  
information sent with each  
plug or see [www.lansas.com](http://www.lansas.com).

## CREDIT

Open account terms will be extended to firms with satisfactory commercial ratings. To avoid delay in servicing an order, we will accept MasterCard or Visa when proper credit information is not available.

## TERMS OF PAYMENT

**NET 30 DAYS** unless otherwise noted. **MINIMUM BILLING \$100.00 EXCLUDING FREIGHT.**

## RETURNED GOODS POLICY

All authorized items returned must have an RMA, must be returned within 30 days of purchase, and are subject to a **20% RESTOCKING FEE**. Items sent without authorization will not be accepted for return. Must be shipped prepaid.

## FREIGHT POLICY

All orders will be shipped via one of the many surface carriers available. All shipments are F.O.B. Lodi, California, to one destination per purchase order. Drop shipment will be made upon request. We strongly recommend the inspection of all items for freight damage upon arrival of shipment. If there is damage to the product you need to notify both **LANSAS® AND THE FREIGHT CARRIER**.

## SPECIFICATIONS

The dimensions, weights, lengths, and other specifics in this and any of our catalogs, telephone quotes and any correspondence are subject to variations within reasonable tolerances as our products are handcrafted.

## ORDERS

All orders are subject to acceptance by our sales office. We will not be held responsible for delays or non-fulfillment due to weather, riots, fire, floods, strikes, acts of God or any causes beyond our control. Invoicing is based on the most current price list.

## PAST DUE ACCOUNTS

**A SERVICE CHARGE OF 1.5% PER MONTH** will be charged on all past due accounts. When purchasing Lansas® products the customer agrees that any collection costs, including attorney or agency fees, will be the customer's responsibility.

## VANDERLANS AND SONS, INC.

CORPORATE OFFICE: LODI, CALIFORNIA

(209) 334-4115 • Sales Fax (209) 339-8260 • Toll Free 1-800-452-4902

STOCKING WAREHOUSES:

Atlanta, GA (770) 509-9309 • Minneapolis, MN (763) 428-9290

# SAFETY AND WARRANTY INFORMATION



**CAUTION:**  
Block plugs to prevent moving.  
See Safety Instructions on  
page 36. Full safety  
information sent with each  
plug or see [www.lansas.com](http://www.lansas.com).

## LANSAS® PRODUCTS WARRANTY INFORMATION

All LANSAS® products are warranted against manufacturing defects for a period of two years from the date of sale.

At their option, Vanderlans and Sons, Inc., will either repair or replace any product found to have had a factory defect. Any product suspected of being defective must be returned, pre-paid freight, to the factory for inspection. Freight collect shipments will be refused.

No liability shall exist in case of misuse, abuse, over/under inflation or other negligence, or for any costs other than the replacement costs of the item in question. No liability is, or shall be, assumed for any consequential damages arising from the use of any device other than stated in this warranty.

Product warranty shall apply only to the original purchaser and is not transferable or assignable.

Manufacturer specifically disavows any other representation, warranty, or liability relating to the condition or use of this product.

Engines and vacuum pumps not manufactured by Lansas® are subject to their specific manufacturer warranty only.

## SAFETY NOTIFICATION

## — SAFETY VIDEO AVAILABLE —

Inflatable products are intended for use in piping systems only. Do not inflate product unless totally confined within proper size pipe.

Each inflatable item is specifically rated for certain pressures under specific conditions. Do not over or under exceed these pressures, as specified for each device. If in doubt, contact the factory.

All inflatable devices must be used with proper blocking or restraints that meet or exceed the standards of the industry, consult a registered engineer.

Inflatable devices are designed for inflation in piping only. Device must conform in rated size(s) to piping size.

Through misuse, abuse, improper storage, age or component failure or malfunction, a device may fail. The user is warned to consider the failure mode of all parts (components) to be used in the system and to provide adequate safeguards to prevent personal injury, death or property damage in the event of a failure mode occurrence.

All end users must be thoroughly instructed in all safety aspects when using these products and how to provide for personal protection in the event of a failure mode.

It is the responsibility of the user to check all components for both accuracy and integrity immediately prior to use. All gauges and pressure components must be checked and certified for function and accuracy.

All end users are cautioned to review specific warnings, ratings, pressures and other information immediately prior to use. This information may be found in instruction sheets, product specification sheets, catalogs/brochures on the device, and/or on attached hang tags.

If such information cannot be located, the user is requested to call the factory at (800) 452-4902 for specific information. Such information will be supplied in written form by FAX or mail upon request. Lansas safety information can also be found on the internet. Check our website: [www.lansas.com](http://www.lansas.com).

Do not operate or attempt to use any inflatable device without proper training and complete information regarding inflatable to be used.

# USEFUL INFORMATION



**CAUTION:**  
Block plugs to prevent moving.  
See Safety Instructions on  
page 36. Full safety  
information sent with each  
plug or see [www.lansas.com](http://www.lansas.com).

## HEAD IN FEET REDUCED TO POUNDS PER SQUARE INCH

CONVERTING HEAD FEET OF WATER TO POUNDS PER SQUARE INCH (PSI)

HEAD FEET	PSI	HEAD FEET	PSI	HEAD FEET	PSI	HEAD FEET	PSI
1	0.43	14	6.06	27	11.69	40	17.32
2	0.87	15	6.49	28	12.12	41	17.75
3	1.30	16	6.93	29	12.56	42	18.19
4	1.73	17	7.36	30	12.99	43	18.62
5	2.16	18	7.79	31	13.42	44	19.05
6	2.60	19	8.23	32	13.86	45	19.48
7	3.03	20	8.66	33	14.29	46	19.92
8	3.46	21	9.09	34	14.72	47	20.35
9	3.90	22	9.53	35	15.15	48	20.78
10	4.33	23	9.96	36	15.59	49	21.22
11	4.77	24	10.39	37	16.02	50	21.65
12	5.20	25	10.82	38	16.45		
13	5.63	26	11.26	39	16.89		

Please remember that pressure is pressure regardless of source and that pounds per square inch in all liquid mediums such as air or water create the same forces to the surface of a plug or testing device.

## CONVERSION CHART

To Convert:	Multiply By:	To Obtain:
bars	14.5	pounds/square inch
millimeters	.03937	inches
cubic feet	7.48052	gallons
feet	30.478	centimeters
feet of water	.8825	inches of mercury
feet of water	.4335	pounds/square inch
inches	25.4	millimeters
inches of mercury	1.133	feet of water
inches of mercury	.4912	pounds/square inch
kilograms	2.2046	pounds
meters	3.281	feet
pounds/square inch	2.307	feet of water
pounds/square inch	2.036	inches of mercury
$\pi = 3.14$	Square Inches = $\pi R^2$	Pounds of Force = PSI x Square Inches

## VANDERLANS AND SONS, INC.

CORPORATE OFFICE: LODI, CALIFORNIA

(209) 334-4115 • Sales Fax (209) 339-8260 • Toll Free 1-800-452-4902

STOCKING WAREHOUSES:

Atlanta, GA (770) 509-9309 • Minneapolis, MN (763) 428-9290

# VANDERLANS & SONS, INC.

1320 SOUTH SACRAMENTO STREET  
LODI, CALIFORNIA 95240

**1-800-452-4902**

**(209) 334-4115 • (209) 339-8260 FAX**

**www.lansas.com**

**E-mail: information@lansas.com**

All orders processed at the  
Corporate Office in Lodi, California



## FACTORY WAREHOUSES:

ATLANTA, GEORGIA

(770) 509-9309 • EMAIL: [ssummers@lansas.com](mailto:ssummers@lansas.com)

MINNEAPOLIS, MINNESOTA

(763) 428-9290

EMAIL: [ktrott@lansas.com](mailto:ktrott@lansas.com)

